

# WorkLife Boston

Experience Guide | Spring 2023

Steelcase

RED THREAD



# Designing the Customer Experience





Steelcase is a global design and thought leader in the world of work. Along with our expansive community of brands, we design and manufacture innovative furnishings and solutions to help people do their best work in the many places where work happens.



# We Design Spaces That Reflect Who We Are + What We Do

**Meet the customer where they are.**

Steelcase brand experiences are designed to push past the edges of the experience itself. We want to build anticipation before the experience, immerse our guests deeply in the experience and continue to extend the impact beyond the experience. To achieve this, each brand experience is highly considered and tightly curated to the specific audience, while consistently reflecting our brand identity.



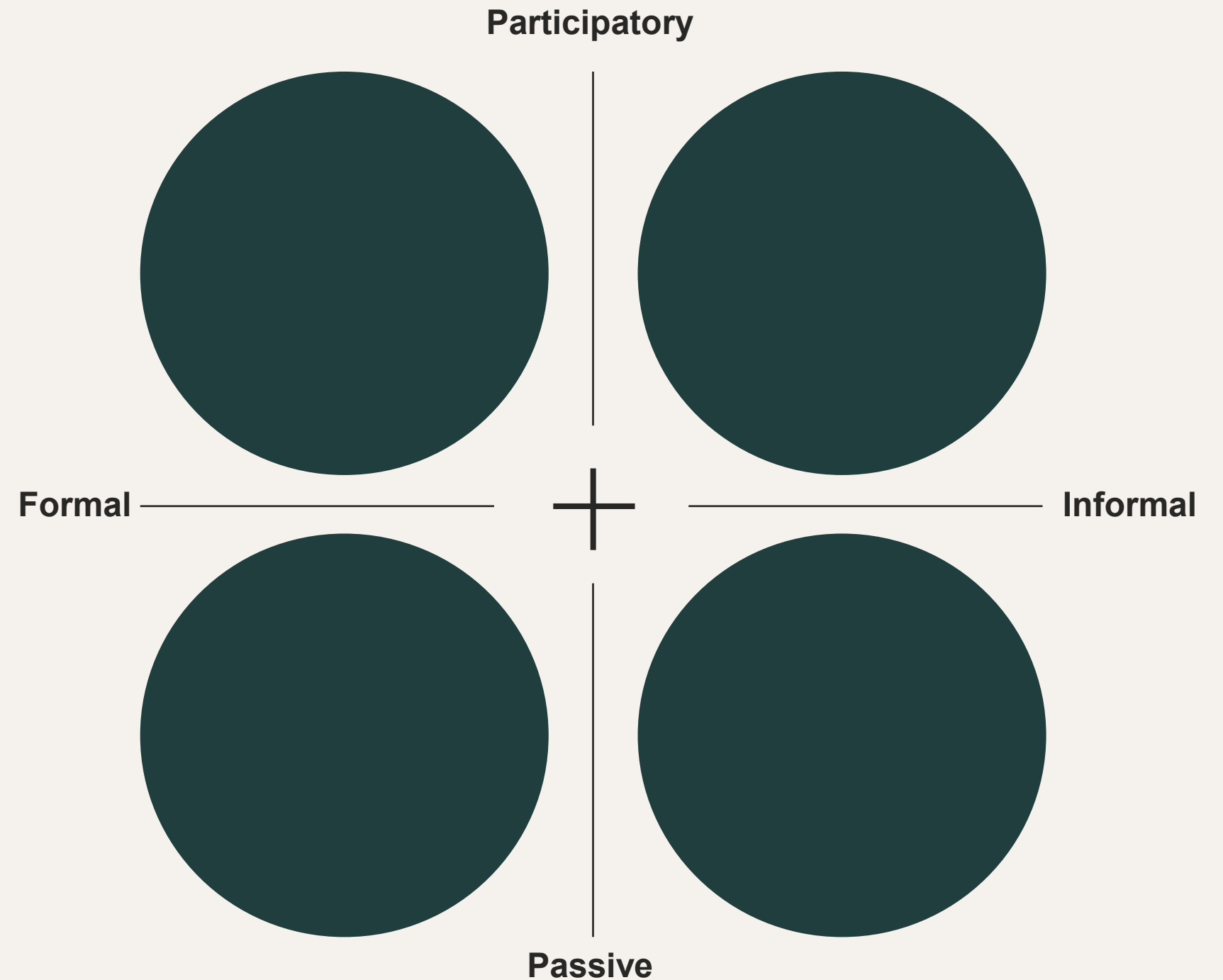


# We Design Spaces That Reflect Who We Are + What We Do

**The better we understand our guests,  
the better the experience we can create.**

Consider the Customer Personality  
Framework when planning an experience.

Do they prefer formal presentation versus  
participatory interactions with our people  
and solutions? This framework allows us to  
thoughtfully consider and design to the  
customer personality and expectations  
resulting in a more impactful and  
meaningful experience.

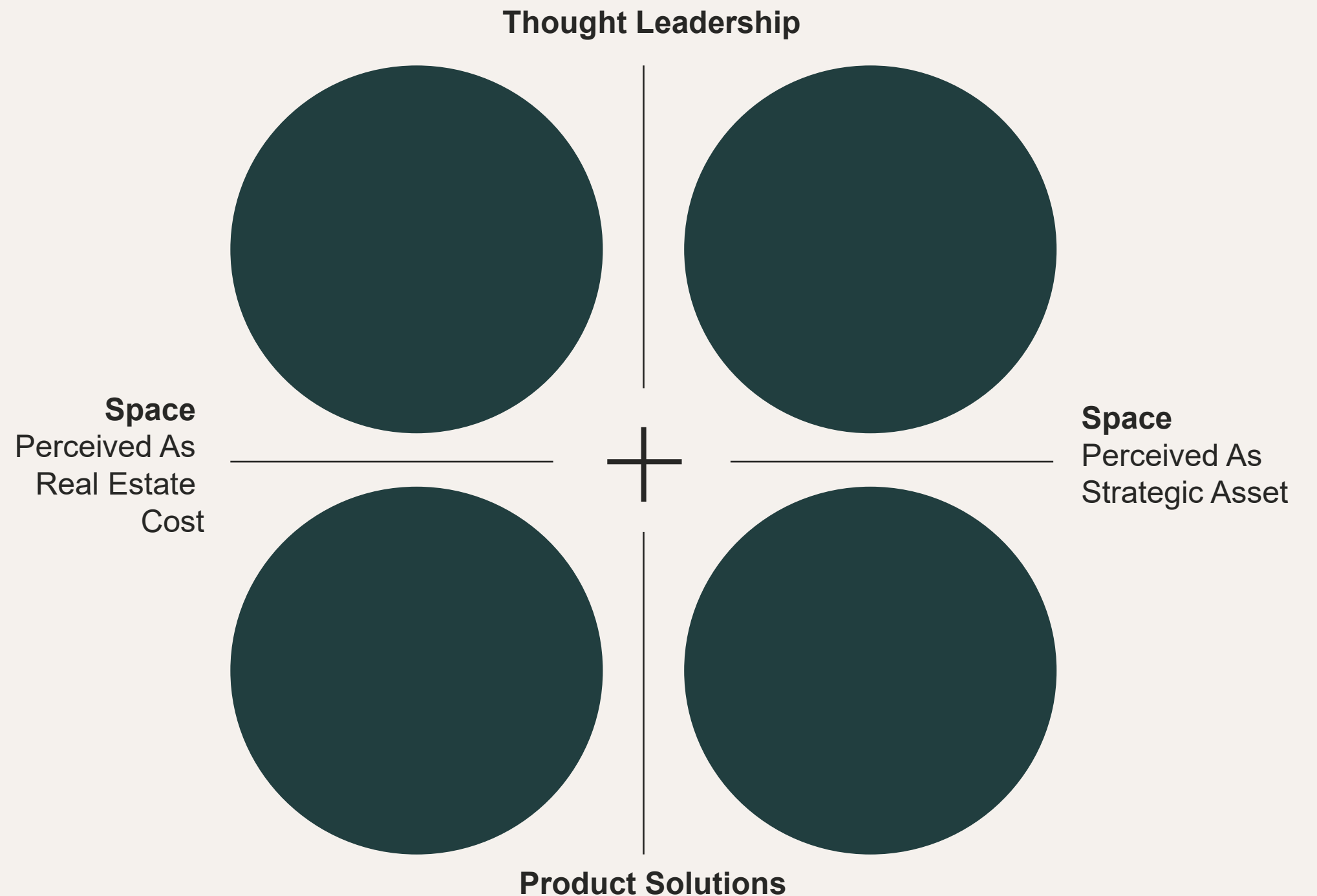




# We Design Spaces That Reflect Who We Are + What We Do

**The better we understand our guests,  
the better the experience we can create.**

Understanding how our customers perceive our brand and their space will help us orchestrate their experience and ongoing journey with us. Do they view us as an industry thought leader or a provider of solutions? Do they view space as cost or strategic asset? This information should form the content and experience we curate.





# Brand Pillars





# How We Do It: Brand Pillars

## Design with Intention

We **design with intention** for the needs of people and the planet, offering products and services that help to make better work experiences, better places to work and a better world.

We design our showrooms as living labs where we test new ideas and solutions with our own employees and guests. These learnings enrich our understanding of your needs and help inform the creation of future products, applications and experiences.





# How We Do It: Brand Pillars

## Build with Inclusion

We **build with inclusion** as we create better futures, fostering equity and belonging in the many places where people work.

We plan a diverse range of collaboration and social destinations designed to deepen human connections in order to build trust and a sense of community. A broad range of applications helps ensure all people are empowered to do their best work.





# How We Do It: Brand Pillars

## Partner with Integrity

We **partner with integrity** because we are committed to doing business honestly and ethically with people, communities and organizations around the world.

We celebrate the Steelcase community of brands and valued partnership with our dealer community to foster existing and new connections.



We help people do their best work  
by creating places that work better.



# Our Story



# The New Work Neighborhood

We design our spaces with settings that speak to how a new era of work has begun and how it's changing the nature of *how* we work and *where* we work. It offers people choices that have never been available to them before, but also requires thinking differently about the places we work and how to design them to truly help people do their best work and organizations achieve their results.



# The New Work Neighborhood

This new era of hybrid work means it's time for the workplace to be reimagined.

*... to shift from a mandatory location to a desired destination*

*... to offer choice + control and offer people the broadest range of spaces and experiences*

*... to foster collaboration while supporting focus work*

*... to be flexible and resilient*

*... to rebuild community and restore connection to organizational culture*

**It needs to draw inspiration from a new source.**



Great neighborhoods  
can be that source.

# The New Work Neighborhood

Great neighborhoods can be that source – Neighborhoods that offer dynamic, vibrant and multi-faceted places and experiences that build community and make people proud to live there.

The concept of workplace planning inspired by neighborhoods isn't new. But its appropriateness is. And so are the amenities it needs to offer workers.

WorkLife spaces explore and illustrate the concept of work neighborhoods and the variety of spaces they should offer to make our workplaces “worth the commute.” Steelcase customer and employee experiences have been thoughtfully designed for hybrid work with new and existing products from Steelcase and our community of brands.



# The New Work Neighborhood

WorkLife spatial applications continue to support the **five things people need and expect** from their work experience:

## **Belonging**

a sense of community, trust and shared purpose

## **Control**

more choice and control over where, when and how they work

## **Productivity**

support in-office and remote workers more equally to focus, collaborate and build relationships

## **Comfort**

places to rejuvenate and support wellbeing

## **Safety**

be and feel physically and psychologically safe

# The New Work Neighborhood

Our spaces also consider the **five things organizations need** to create great work experiences in their spaces:

## **Resilience**

overcoming adversity, managing constant change, continuous learning

## **Community**

connection to culture, voice of the employee, inclusion, engagement

## **Purpose**

shared vision, direction + clarity, shared leadership

## **Social Capital**

trust, accountability, transparency

## **Innovation**

creativity, ability to take risks, effective processes



# A Framework for Employee Experiences

To meet the needs of people at work, a hybrid neighborhood needs to support three employee experiences:



Equity

Create a more equitable and inclusive experience for all participants, with a design goal to eliminate the gap between co-located + remote employees.

Engagement

Design settings for a range of experiences that help people participate fully, focus deeply and stay in flow longer.

Ease

Design a variety of intuitive virtual and physical experiences that are easy to navigate and control.

# A Framework for Employee Experiences

Which is why organizations should look to thriving communities as a model for work and the places where people work. People are not static. Work is not static. And a workplace can't be static if companies want their many stakeholders to thrive.

## **Creating a community at work can:**

Attract people together

Increase engagement and productivity

Build a connection to your culture

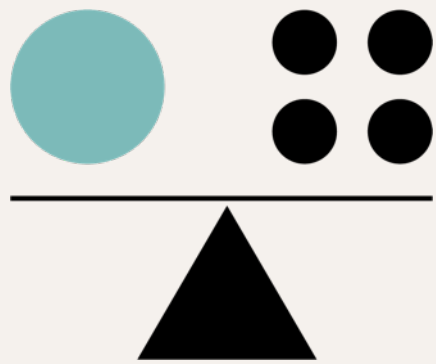
Foster resilience

Adapt easily



# A Framework for Employee Experiences

WorkLife spaces also continue to support the **Work Better** four design principles:



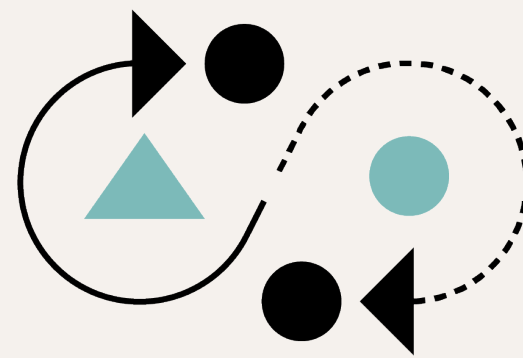
## Me + We

Equally support team and individual work

Allow for quick shifts between working alone and together

Balance 4 key space types:

*personal, collaboration, learning, social*

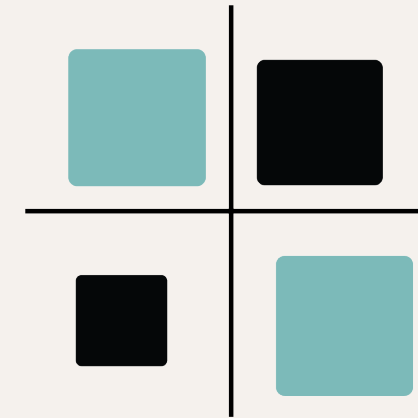


## Fixed-to-Fluid

Multi-modal spaces support multiple purposes and modes of work

Adaptable spaces: Highly mobile furniture, power, technology and space division

Flexible architectural elements allow for multiple ways to reorganize space



## Open + Enclosed

More enclosed “me” and more open “we” spaces

More options for individual spaces with a range of privacy and control

More open team spaces with flexible boundaries



## Braiding Digital + Physical

Increased video use in “me” and “we” spaces

Create inclusive experiences for those remote *and* physically present

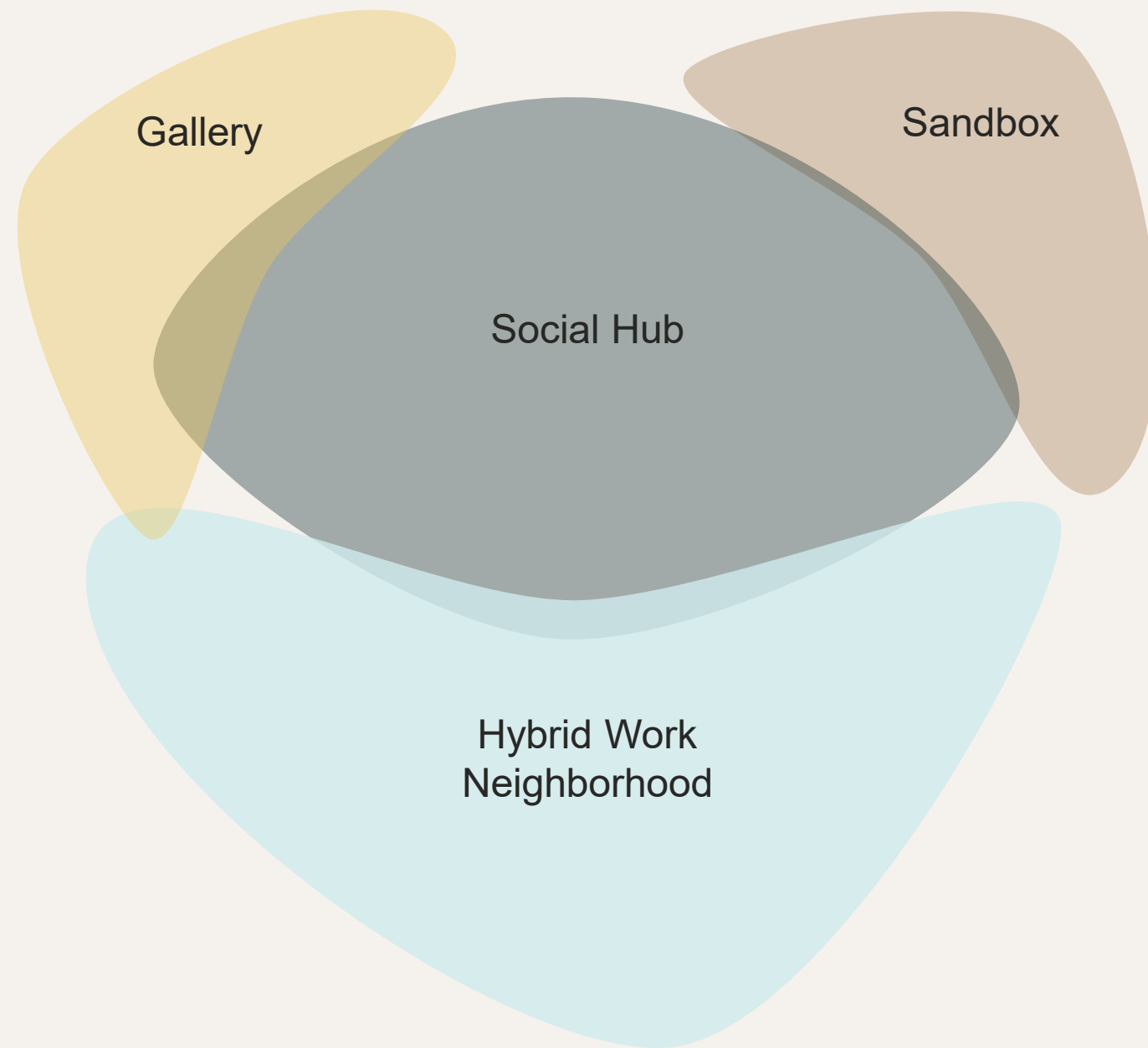
Embed smart, sensing technologies for seamless data-driven and AI-driven experiences

It's time to reimagine the  
places people work.



# The Experience

# The Experience



Moving forward, our spaces will consist of a combination of four key areas that scale to create a market relevant experience.

## **Social Hub:**

- . Space to gather and greet
- . Multi-modal + high performance
- . Magnet space to see and be seen

## **Gallery:**

- . Support the community of brands
- . Refreshed often to support new launch
- . Exhibit like + object based
- . Contract focused + Consumer friendly

## **Hybrid Work Neighborhood:**

- . Illustrate campaign story
- . Range of regionally relevant settings
- . Informed by product launch strategies

## **Sandbox:**

- . Bridge contract + consumer
- . Provide places to explore product range + choice
- . Seating Difference + Materiality Experience



# WorkLife Boston

## Our Experience

### Social Hub:

- . Space to gather and greet
- . Multi-modal + high performance
- . Magnet space to see and be seen

### Gallery:

- . Support the community of brands
- . Refreshed often to support new launch
- . Exhibit like + object based
- . Contract focused + Consumer friendly

### Hybrid Work Neighborhood:

- . Illustrate campaign story
- . Range of regionally relevant settings
- . Informed by product launch strategies

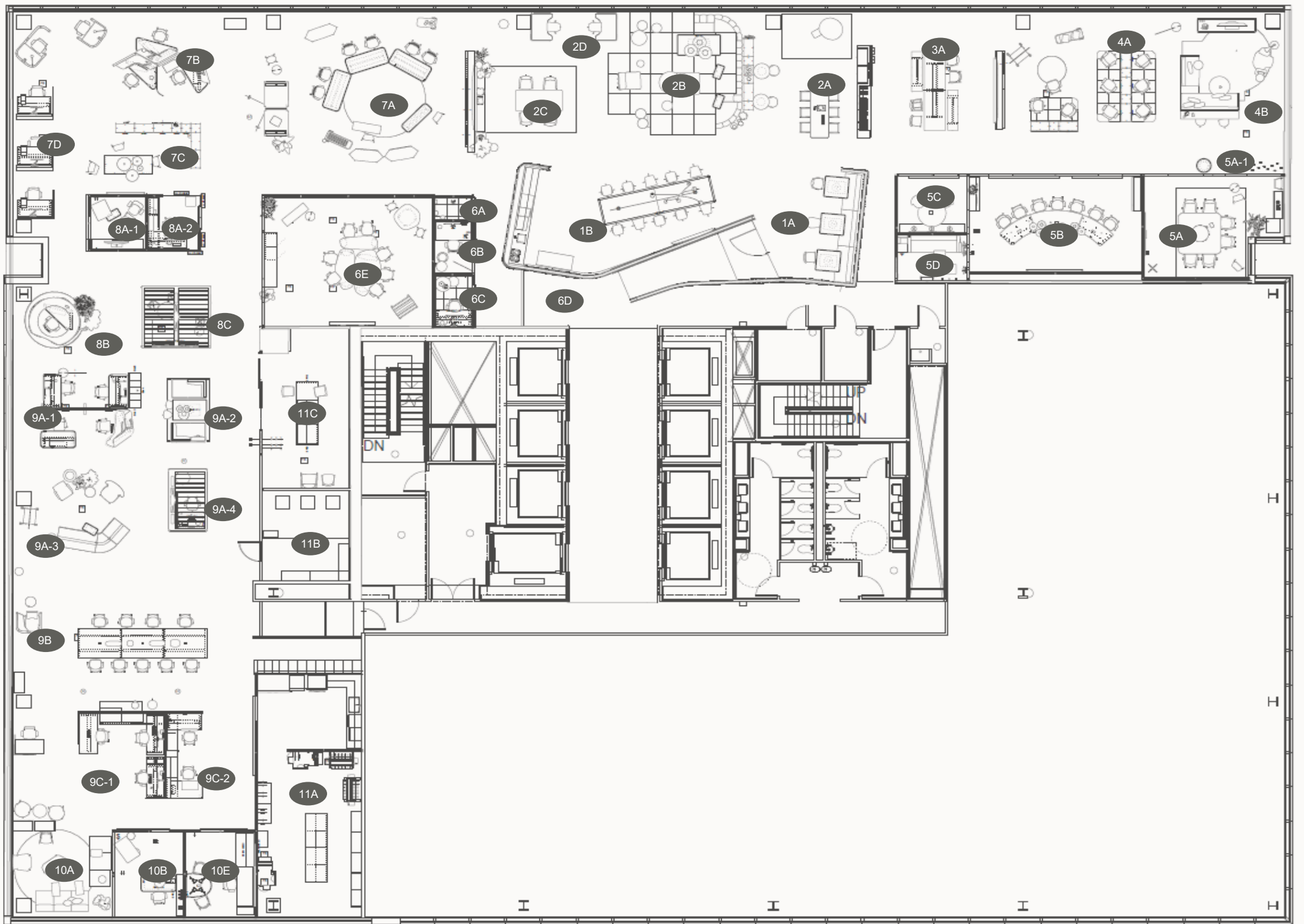
### Sandbox:

- . Bridge contract + consumer
- . Provide places to explore product range + choice
- . Seating Difference + Materiality Experience



# WorkLife Boston

Our Experience





# Social Hub

## 1A Work Banquette

**We begin in the Social Hub.** The Social Hub is a highly accessible space that acts as an anchor to bring people together to gather, build community, support gracious hosting and allow informal access to employees and guests.

The banquette is a welcoming threshold allowing shallow focal work and impromptu connections as colleagues arrive and depart the office.

### PRODUCT SOLUTIONS

**VICCARBE MAARTEN CHAIR, WOOD, NO ARMS**

SOFT UPHOLSTERY

FINISH: MATT OAK MOAK

FABRIC: KVADRAT HALLINGDAL 65 110

**COALESSE CARL HANSON & SON CH24 WISHBONE CHAIR**

FINISH: OAK – SOAP

**COALESSE CAL HANSON & SON CH23 DINING CHAIR**

FINISH: OAK SOAP

**COALESSE TOGETHER BENCH**

FABRIC : DESIGNTEX HEATHER GULL GREY

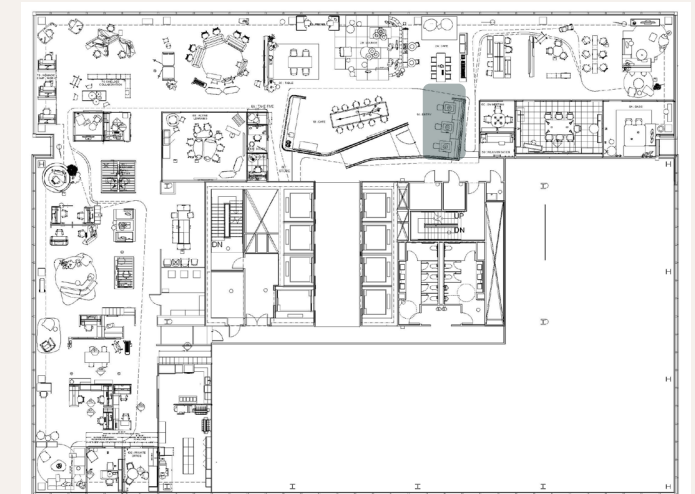
**COALESSE MONTARA TABLE**

TOP : SADDLE OAK

BASE : OBSIDIAN



NOTE: APPLICATION REVISED – NEW RENDERING REQUIRED





# Social Hub

## 1B Connections + Nourishment

The large dining experience is a place to host, work and build community. Digital displays provide visible access to campaign information build brand awareness for employees and customers.

### PRODUCT SOLUTIONS

#### **VICCARBE KLIP STOOLS**

FABRIC : DIVINA MELANGE 0827

SMOOTH FABRIC

LEG : BLACK GLOSS

ARM : FLUORESCENT ORANGE RAL 20

#### **VICCARBE MAARTEN STOOLS**

FABRIC : STEELCUT TRIO 124

SOFT FABRIC

LEG : FLUORESCENT ORANGE RAL 20

ARM : FLUORESCENT ORANGE RAL 20

#### **POTRERO TABLE**

TOP : CUSTOM TOP FROM ERDL

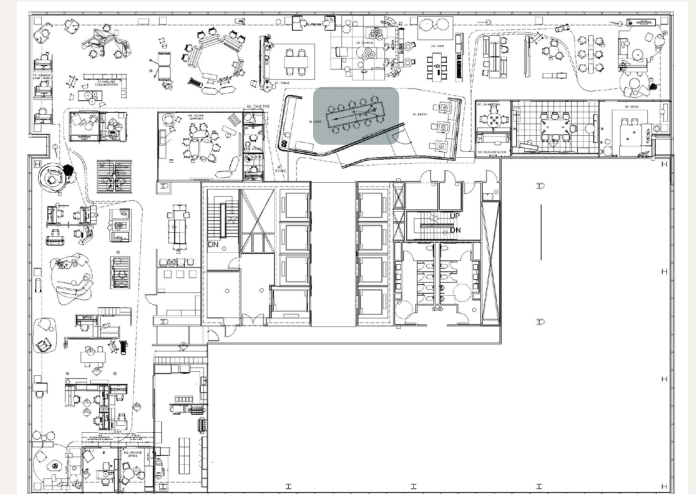
BASE : LOW GLOSS BLACK

LEG RING : COPPER

POWER : ARCTIC WHITE

#### **FLOS AIM SET OF 5 WITH MULTI-CANOPY**

FINISH: BRONZE





# Social Hub

## 2A Welcome + Touch Down

The slim table provides a quick destination for short duration work and serendipitous interactions with colleagues and customers. It's a threshold for greeting, to provide a warm welcome while maintaining productivity. The lounge setting is an adjacent quick nearby retreat for calls with a view.

### PRODUCT SOLUTIONS

#### COALESSE LAST MINUTE STOOLS

FABRIC: DESIGNTEX BUTE STORR GREY

BASE: MARLIN

#### MOOI HANA WINGBACK ARMCHAIR

FABRIC: EA MENAGERIE OF EXTINCT ANIMALS VELVET RAVEN

#### MOOI HANA ARMCHAIR LOW BACK:

FABRIC: EA DODO PAVONE DARK GREY

#### POTRERO LIGHT TABLE

TOP: WHITE MARBLE

LEGS: OAK

LEG RING: POLISHED CHROME

#### URBAN TREE SCULPTURAL SIDE TABLE

CYPRESS

#### TOM DIXON SIDE TABLE

TOP: BLACK GLASS

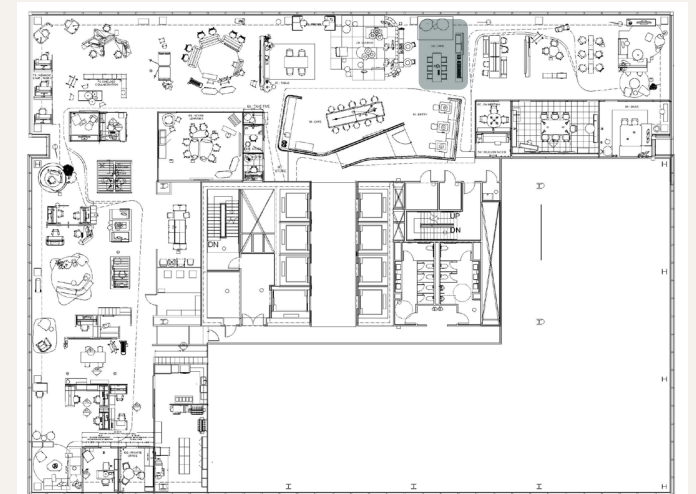
BASE: BRONZE MIRROR

#### MOOOI RUG QUIET COLLECTION: MORNING ASPHALT 200 X 300

#### BOLIA PLANTERS

#### BLUDOT AMOS COAT RACK

FRAME: OBLIVION SHELF : WALNUT





# Social Hub

## 2B Social Lounge

A restful place to build social connections with a range of lounge postures with convenient access to work surfaces and integrated power and simple access to mobile battery. This setting plans for visual access to large scale digital display for in-person and hybrid events with diverse content. Standing height tables and stools allow for additional 'out-field', or shallow participation.

### PRODUCT SOLUTIONS

**WEST ELM WORK COLLECTION BELLE:** DESIGNTEX W – HUNTER

**STEPHEN KENN INDIGO LEATHER & ANTIQUE BRASS ARMCHAIR**

**MATTIAZZI BRANCA BARSTOOLS:** BLACK ASH

**WEST ELM WORK COLLECTION HORIZON COFFEE TABLES**

ROUND: WHITE MARBLE SQUARE: BLACK MARBLE . LEGS : BRONZE

**WEST ELM WORK COLLECTION MAISIE SIDE TABLE**

TOP: WHITE MARBLE, BASE : BRONZE

**WEST ELM WORK COLLECTION STUMP SIDE TABLE**

TOP: WHITE MARBLE , BASE : BRONZE

**COALESSE LAGUNITAS LOUNGE TABLE**

SURFACE: SATIN WHITE

BASE: LOW GLOSS BLACK , POWER : MILK

**COALESSE LAGUNITAS LAPTOP TABLE**

TOP: SATIN BLACK BASE : OBSIDIAN

**MOOI CONTAINER TABLES**

TOP: LINOAK – BLACK BASE: NATURAL OAK

**FLEX ACTIVE FRAMES** , FRAME: OBSIDIAN

SHELVES : SATIN BLACK

ACCENT PAINT: MATTE BRASS

**FLEX MOBILE POWER** BLACK

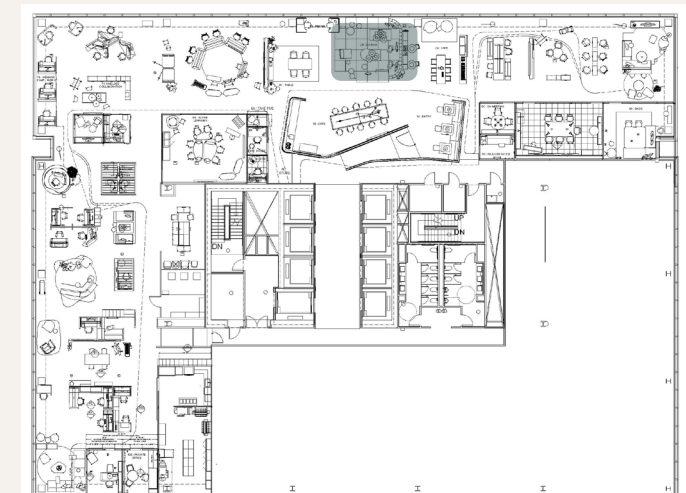
FLOS GLO BALL LIGHTS

**URBAN TREE CORE SIDE SIDE, SCULPTURAL SIDE, NATURAL TREE TABLES**

**BLUDOT TURN SIDE TABLE**

**SHAW TILES** – STILL LIFE 5T214 GRAPHITE QUARTZ: 11596

**BOLIA + WEST ELM PLANTERS**





# Social Hub

## 2C Alone Together

A communal setting that offers a restorative space for coworkers to engage and sustain the pace of work while benefiting from social surroundings. People can work together or alone while maintaining a sense of community and culture.

### PRODUCT SOLUTIONS

#### COALESSE MARIEN152 CHAIRS

EXTERIOR FABRIC: KVADRAT APPAREL 0213

CUSHION FABRIC: KVADRAT REMIX 0722

BASE: OBSIDIAN

#### TOM DIXON SLAB TABLE

FINISH: BLACK OAK

#### WEST ELM WORK COLLECTION NOLAN TABLE

BRASS

#### VICCARBE TIERS TABLE

TOP: WHITE LAQUER CIRCLE, BLACK ASH RECTANGLE

BASE: WHITE PAINT

#### ESTABLISHED AND SONS WRONGWOODS LONG LOW CABINET

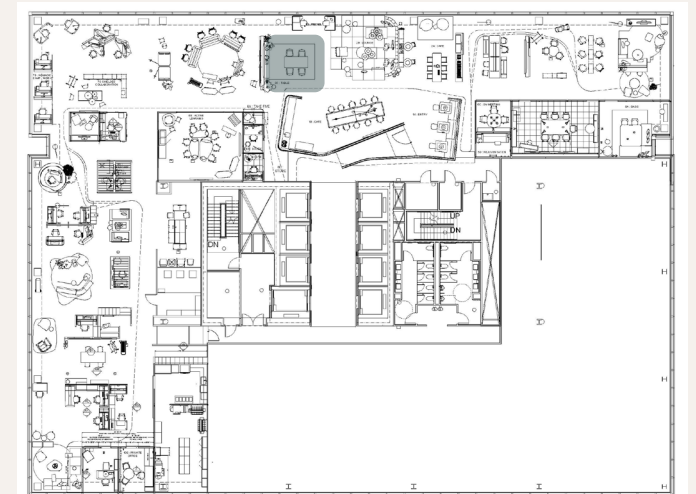
WHITE WITH BLACK

#### MOOOI RUG HORIZON SUNRISE 300 x 400

#### WEST ELM PLANTERS

MID CENTURY TURNED WOOD LEG PLANTERS – WHITE POT

SPUN METAL STANDING PLANTERS - BRASS





# Social Hub

## 2D Focus Nook

This cluster of Lagunitas settings provides a destination for users to find moments of focus in the business of the social space while maintaining proximity to the exterior environment and the business of the social spaces to balance privacy + focus with interactions with co-workers and guests.

### PRODUCT SOLUTIONS

#### SERIES 1

FRAME – SEAGULL

UPHOLSTERY KVADRAT PILOT 0772

#### COALESSE LAGUNITAS FOCUS NOOK

EXTERIOR FABRIC: DESIGNTEX HEATHER DAPPLE

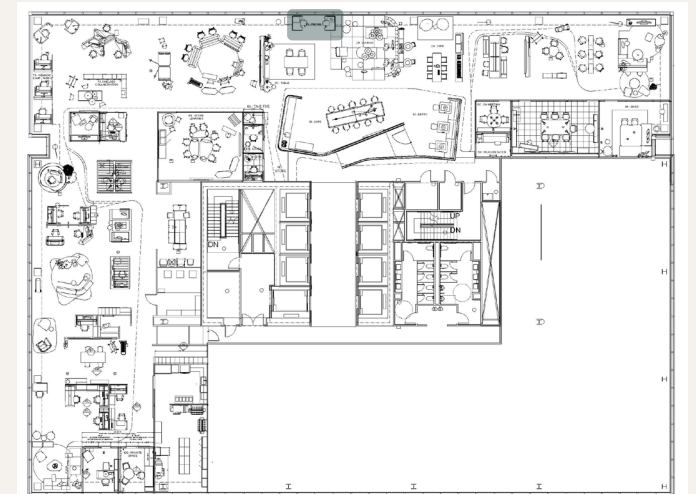
INTERIOR FABRIC: DESIGNTEX HEATHER BLUEBELL

SURFACE: PLANKED OAK

POWER: WHITE

STEELCASE LED INTRO SINGLE ARM TASK LIGHT

FINISH: MATTE BLACK





# Social Hub

## 6A Personal Hybrid

A compact all-in-one video conference system allows employees to connect direct to the in-room system or from a personal device using MS Teams or Zoom platform. Calls can originate from the Neat all-in-one system or the in-room display can augment the personal device, adding to the experience. The small space is adjacent to the collaborative spaces in the social hub for simple transitions to remote connections when acoustic privacy is required.

### PRODUCT SOLUTIONS

#### VICCARBE ALETA STOOL

UPHOLSTERY: KVADRAT DIVINA MD 973

BASE: BLACK RAL 9005

#### VICCARBE ELI

BASE: BLACK LACQUER ON METAL

#### VIA WALLS

DOUBLE GLAZING: CLEAR GLASS 6500

UPHOLSTERED SKINS: DESIGNTEX MELANGE 3492 303 SALMON

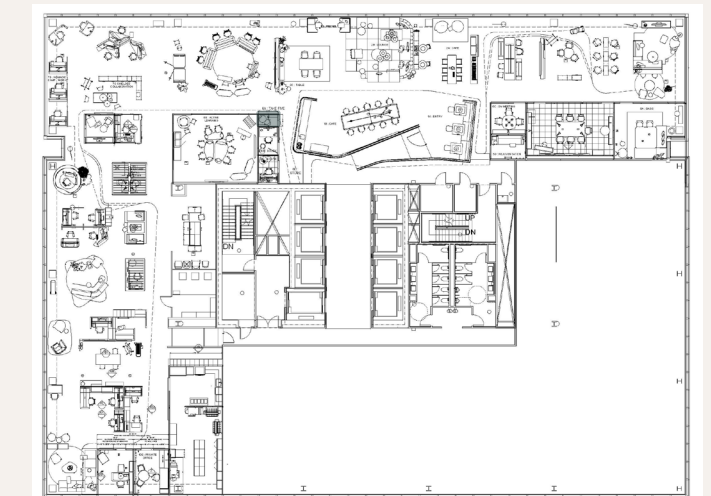
UPHOLSTERED SKINS: DESIGNTEX MELANGE 3492 804 CARBON

STEEL SKINS: ARCTIC WHITE 7241

#### CARPET

SHAW STILL LIFE 5T214 GRAPHITE QUARTZ: 11596

#### NEAT FRAME





# Social Hub

## 6B Hybrid Kiosk

This hybrid setting provides a space that allows for simple posture shifts between seated and standing height and amplifies personal devices for individual content and connections for remote collaboration. Also adjacent to the collaborative spaces in the social hub for simple transitions to remote connections when acoustic privacy is required but slightly larger for longer duration.

### PRODUCT SOLUTIONS

#### STEELCASE SERIES 2 STOOL

FRAME: SEAGULL

FABRIC: ERA PINK LEMONADE

BASE: BLACK

#### STEELCASE B FREE TABLE

TOP: SATIN STONE 24H3

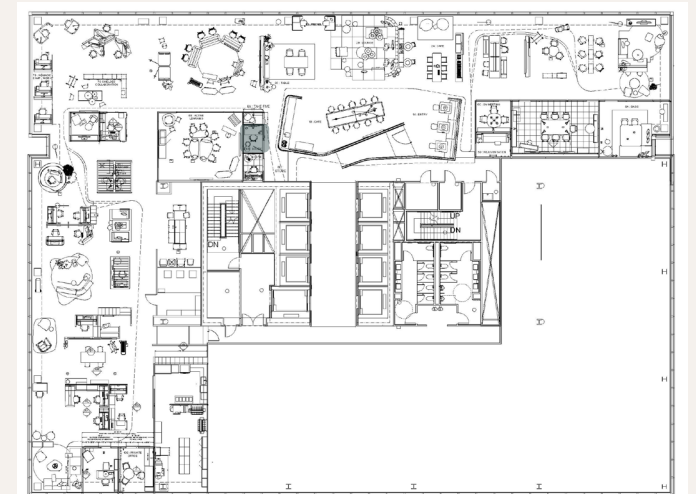
BASE: NATURAL 3861

#### CF SERIES EVOLUTION SINGLE MONITOR ARM

FINISH: BLACK

#### CONVENIENCE POWER

FINISH: MERLE



# Social Hub

## 6C Hybrid Enclave

Comparable to the kiosk, this hybrid setting provides a space that allows for simple posture shifts between seated and standing height but with a height adjustable table. Technology solution is same, amplifies personal devices for individual content and connections for remote collaboration and like the kiosk, this setting plans for focused hybrid experiences that can range from short to long durations.

### PRODUCT SOLUTIONS

#### SILQ

FRAME: SILVER LILAC

FABRIC: ERA PINK LEMONADE 5ER8

#### BIVI HAD

TOP: STORM NOCE

BASE: ARCTIC WHITE

BLUDOT COCO TABLES

#### CF SERIES INTRO SINGLE MONITOR ARM

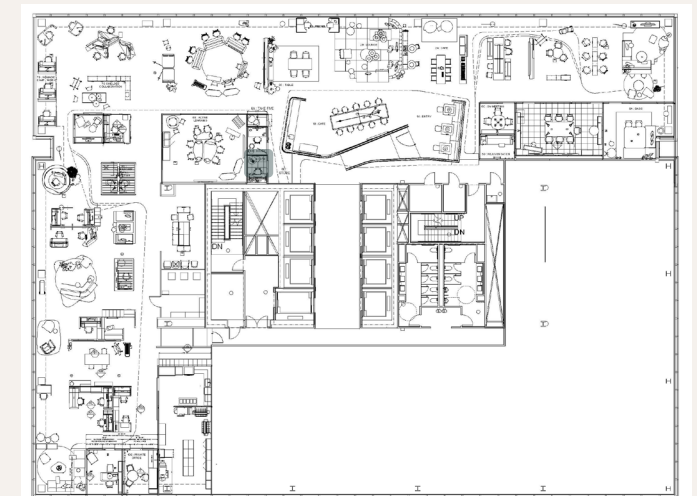
FINISH – BLACK

#### FLOS IC PENDANT

FINISH: BLACK

#### FLOR CARPET TILES

PALM READER: AQUAMARINE





# Social Hub

## 6E Collaborative Learning

This collaborative learning space offers versatility and reconfigurability to encourage hybrid learning. Organic table shapes are easily moved to shift between varying modes of collaboration and group dynamics. In person participants can choose high performance seating or perch on shorter duration options depending on levels of focus. Remote participants amplified into 100" display with camera view to analog in room content. Microsoft Surface Hub allows for digital content participation of both in room and remote users.

### PRODUCT SOLUTIONS

#### STEELCASE SILQ STOOLS

UPPER BACK: MERLE

LOWER BACK: LOW GLOSS BLACK

ARMS / BASE: OBSIDIAN

FABRIC: KVADRAT DROP 0661

#### STEELCASE BFREE BEAM

FABRIC: KVADRAT REFLEX 0779

LEGS: NATURAL OAK

FOOTRAIL: ELECTRICAL INDIGO

#### STEELCASE ELBROOK TABLES

TOP: SATIN STONE BASE: MATTE COPPER

#### TURNSTONE CAMPFIRE HALF TABLE

FINISH: VERANDA TEAK

#### STEELCASE VERB MARKERBOARD EASEL

FINISH: PLATINUM METALLIC

#### TURNSTONE MOBILE STORAGE

FINISH: ARCTIC WHITE

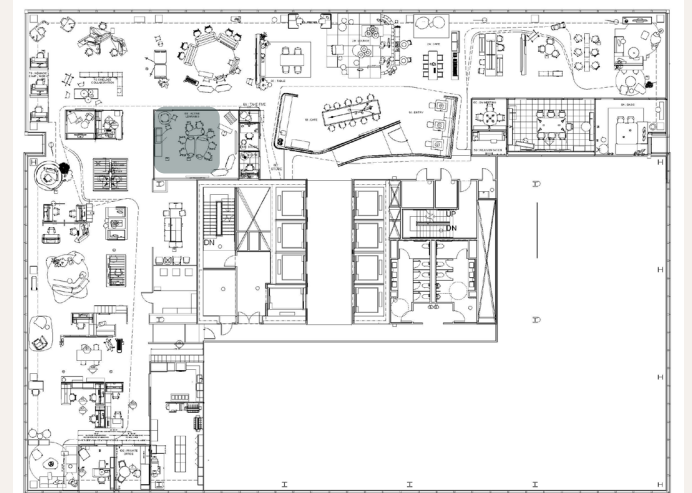
#### VICTOR MOBILE TRASH RECEPTACLE

CASE | DOORS: ARCTIC WHITE

#### STEELCASE FLEX STAND

TOP: BALTIC BIRCH BAS: MERLE

#### 85 MICROSOFT SURFACE HUB





# Hybrid Work Neighborhood

## 7A Dynamic Collaboration

This hybrid collaboration space is designed for in-person and virtual generative and informative working sessions. Proximity matters in this space and thoughtful consideration is given between people, content, displays and the camera as the Surface Hub gives remote participants a seat at the table and a place for generative content share. Flexible furniture plans for disruption and simple change while nearby pods provide architectural boundary and support individual hybrid focus.

### PRODUCT SOLUTIONS

#### BFREE BEAM

FABRIC: KVADRATE REFLEX 0779

LEGS: 3861 NATURAL FOOTREST: 4EE9 ELECTRIC INDIGO

#### STEELCASE SERIES 1 STOOLS

FRAME: SEAGULL

MESH: GRAPHITE

SEAT: KVADRAT STEELCUT TRIO 806

#### STEELCASE FLEX PERCH STOOLS

FINISH: MERLE | SAFFRON

#### MONTARA650 STOOL, BAR HEIGHT

FABRIC: KVADRAT ATOM 0124

BASE: 4EE9 ELECTRIC INDIGO

STEELCASE FLEX SLIM TABLE

TOP: RECLAIMED GRAVEL

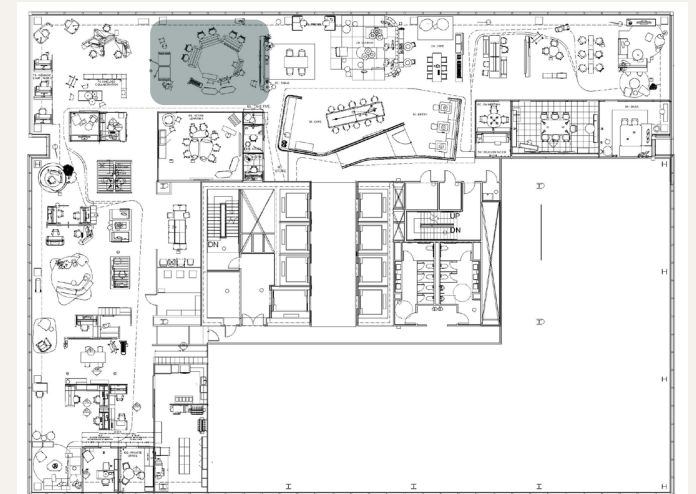
LEGS: ELECTRIC INDIGO

FOOTREST: ELECTRIC INDIGO

ROAM CART WITH 55 MICROSOFT SURFACE HUB



NOTE: APPLICATION REVISED – NEW RENDERING REQUIRED





# Hybrid Work Neighborhood

## 7A Dynamic Collaboration

### PRODUCT SOLUTIONS (CONTINUED)

#### STEELCASE FLEX CARTS

FRAME: MATTE BRASS

SHELVES: MERLE

#### STEELCASE FLEX PERSONAL TABLE

BASE: AURA

TOP: CLEAR MAPLE LAMINATE

#### ORANGEBOX ON THE QT: LOW

FRAME: BLACK 7207

DOOR HANDLE: VP03 BLACK OAK

EXTERIOR CLADDING 2977: WHITE MARKERBOARD LAMINATE

EXTERIOR CLADDING 3862: BALTIC BIRCH

COVER CAP: MERLE

INTERIOR CLADDING PT19: CHARCOAL

LEAN PAD: CAMI01 SYNERGY LDS74 AFFINITY

SCREEN: DESIGNTEX EVERYWHERE TEXTURE 4147 701 EMBER

#### ORANGEBOX ON THE QT: TALL

FRAME: BLACK 7207

DOOR HANDLE: VP03 BLACK OAK

EXTERIOR CLADDING 2977: WHITE MARKERBOARD LAMINATE

EXTERIOR CLADDING 3862: BALTIC BIRCH

COVER CAP: MERLE

INTERIOR CLADDING PT19: CHARCOAL

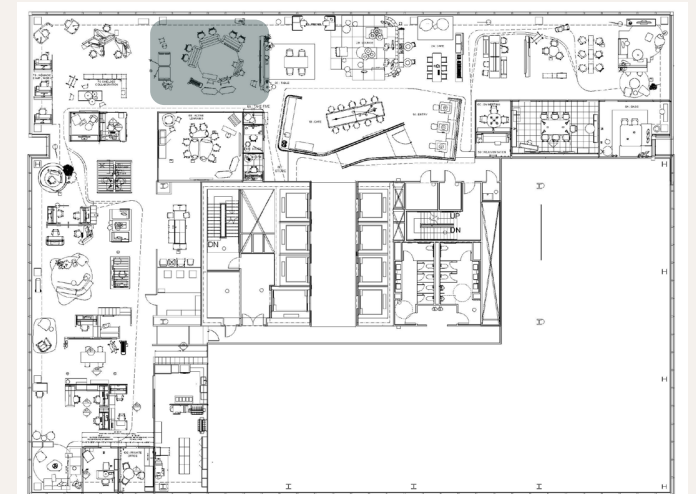
LEAN PAD: KVADRAT DIVINA MD 673

PRIVACY SCREEN: KVADRAT DIVINA MD 673

SHELF: 2409 CLEAR MAPLE



NOTE: APPLICATION REVISED – NEW RENDERING REQUIRED





# Hybrid Work Neighborhood

## 7B Hybrid Focus (Hex)

Steelcase Flex Personal Spaces in the Hex typology gives people heightened level of privacy, control and comfort in the hybrid workplace. The Cast Shadow finish celebrates imperfection and adds an industrial aesthetic. The innovative and unique desk and wrap geometry provides a more fluid space to shift between modes of work and allows for three key desk configurations allowing on successful video experience, . Mobile desks combined with freestanding wraps provide desirable backdrops when users need to connect with remote participants.

### PRODUCT SOLUTIONS

#### STEELCASE KARMAN

FRAME: MERLE REAR FRAME OBSIDIAN

INTERMIX: RED BLUE SHIFT

#### FLEX PERSONAL SPACES HAD

TOP: BALTIC BIRCH BASE: MERLE

BRAIDED CORD: MERLE BRAIDED

CONTROLLER: ACTIVE TOUCH CONTROLLER

MODESTY PANEL FINISH: MERLOT

#### FLEX PRIVACY WRAP FREESTANDING:

WRAP AND LIGHT - MERLE

#### AMQ REVI PED

STORAGE FINISH: F3 BLACK

NO BAG DROP, WITH MAGNETIC SEAT CUSHION

VERVE FB01 BRIQUETTE

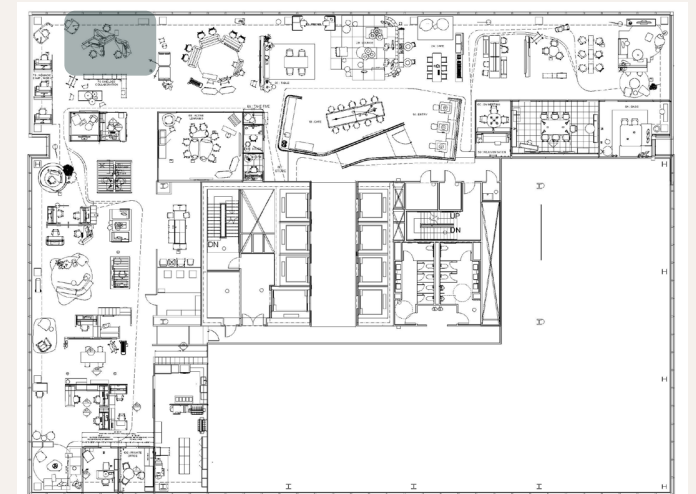
#### ANSWER PANELS

PAINT: CAST SHADOW

#### ECLIPSE LIGHTING

PAINT: BLACK

LOGITECH BRIO CAMERAS





# Hybrid Work Neighborhood

## 7C Project Team

Define space by creating a productive, flexible and inspiring destination for teams. This “kitchen island” provides a gathering place for the team to connect and is ideal for quick standing meetings or collaborative working sessions surrounded by productive team storage solutions allowing space for personal artifacts, project tools and space for annotation and pin up. Team members project content to the digital display for an intuitive share.

### PRODUCT SOLUTIONS

#### STEELCASE FLEX ACTIVE FRAMES

FRAME: MATT BRASS 4B22

SHELVES: FAWN CYPRESS 2TH2

DOORS: ARCTIC WHITE 2730

INFILLS: DARK HEATHER GREY P631

ACCENT PAINT: ELECTRIC INDIGO 4EE9

#### ORANGEBOX CUBB WORK TABLE

LEGS: CLEAR OAK

CHASSIS: BALTIC

TOP: ARCTIC WHITE

#### STEELCASE QIVI STOOLS

FRAME: MATTE BRASS

BACK | ARMS: ARCTIC WHITE

KNIT: COCONUT

UPHOLSTERY: DESIGNTEX ADLER 3661-901 TOGER LILY

#### STEELCASE FLEX PERCH STOOLS

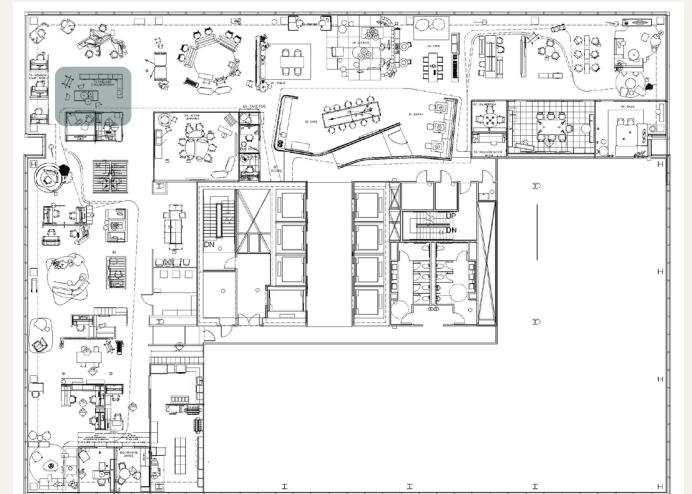
FINISH: 6527 MERLE 6BD7 SAFFRON

#### TOM DIXON BEAT PENDANT

FINISH: BLSO5-PUSM2 MATTE BLACK/BRASS



NOTE: APPLICATION REVISED – NEW RENDERING REQUIRED





# Hybrid Work Neighborhood

## 7D Personal Focus

This cluster of individual settings provides a series of seated posture options for users to find moments of focus in the business of the team environment. Situated adjacent to the exterior, boundary elements provide privacy while maintaining exterior adjacency.

### PRODUCT SOLUTIONS

#### STEELCASE BRODY

COLOR SCHEME OBSIDIAN

SURROUND: BILLIARD 5H22: INK

BRACLET FINISH: 4B20:OBSIDIAN

SCREEN: FABRIC BILLIARD5 H22:INK

SURFACE: 3P61: OP PLANKED

LIGHT: 4710: LOW GLOSS BLACK

POWER FINISH 7250: STERLING DARK SOLID

#### ANSWER

PAINT: MERLE

BOUNDARY: SMOKED WALNUT

FABRIC: INTERSECTION SILHOUETTE

GLASS: ELECTRIC INDIGO

AMQ ACTIVE PRO DESK ARCTIC WHITE LAMINATE, MERLE BASE

#### PERSONAL CONSOLE

FRAME: ARCTIC WHITE

PAD: LIPSTICK (MERLOT)

#### THINK SEATING

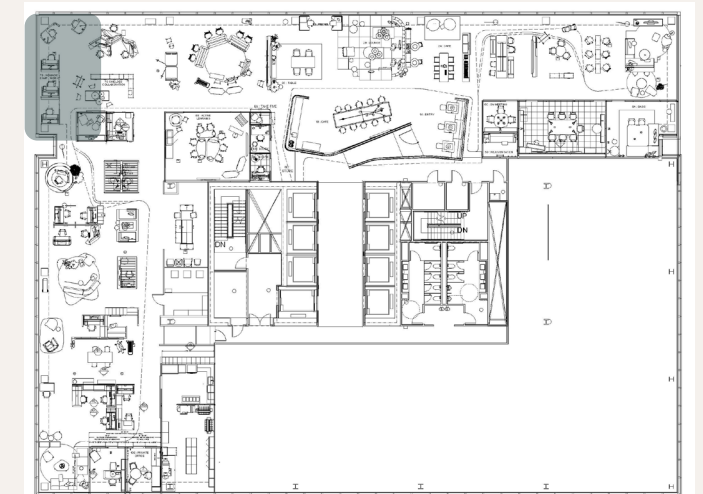
FRAME: SEAGULL

UPHOLSTERY DESIGNTEX HEATHER – ULTRAVIOLET

#### THINK SEATING

FRAME SEAGULL

UPHOLSTERYKVADRAT PILOT 582





# Hybrid Work Neighborhood

## 8A1 Hybrid Lounge

This lounge posture hybrid meeting space offers the opportunity to quickly engage in a meeting featuring Microsoft Teams and Logitech. Together these products deliver a simplified video experience, making it easy to start, join and collaborate. Lounge options with personal tables keep users engaged with personal devices.

### PRODUCT SOLUTIONS

#### LEAP LOUNGE AND OTTOMAN

UPHOLSTERY: BIXBY MACRO 3924 402 NITE

#### MILLBRAE; CHAIR-LOUNGE

BASE LUXCOATS BURNISHED BRONZE

UPHOLSTERY DESIGNTEX BUTE STORR 3806 501 SMOKY GREEN

#### LAGUNITAS PERSONAL

TOP FINISH : 6271 PLYWOOD

BASE: LUX COATINGS BURNISHED BRONZE

#### CREDENZA

BLU DOT DANG LONG AND LOW

COLOR RISK-AVERSE GREY

#### VIA

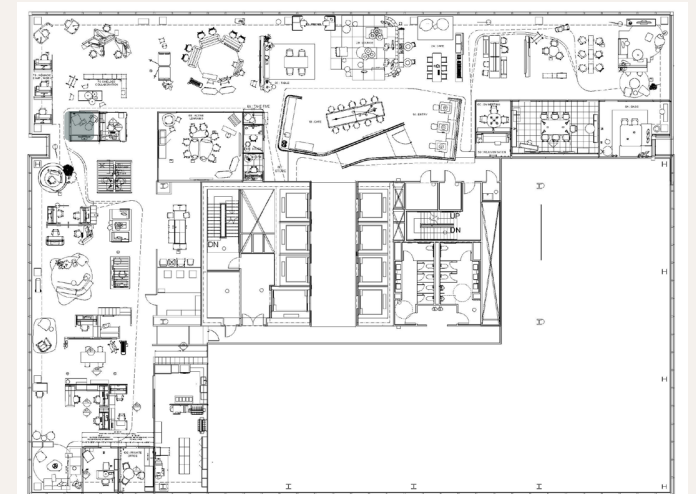
WOOD: CUSTOM STAIN 3GAX BROOKSIDE TEAK QUARTERED VENEER

FABRIC: DESIGNTEX ARNE 4141 803 GREY

#### FLOS SMITHFIELD PENDANT

FINISH: BLACK

LOGITECH RALLY BAR | TAP CONTROLLER





# Hybrid Work Neighborhood

## 8A2 Private Office

This shared, reservable space allows for acoustically private focus and hybrid work within an enclosed space. The slim leg height adjustable desk encourages change in posture wrapped in an elegant design. Currency enhanced storage provides a simple solution to personal items.

### PRODUCT SOLUTIONS

#### STEELCASE KARMAN

FRAME: BLACK REAR FRAME MATTE BRASS BASE: MATTE BRASS

INTERMIX: BLACK

#### SLIM LEG HAD

SHROUD FINISH: LUX 4B23 BURNISHED BRONZE

COLUMN FINISH: 0835 BLACK

WOOD: WASHED WALNUT

#### LOWER STORAGE

LAMINATE: SATIN STONE

PULL: NILE SMOOTH BRONZE

#### VIA

FABRIC DESIGNTEX ARNE 4141 405 DARK TEAL

WOOD WASHED WALNUT

#### LIGHTING

TOM DIXON COPPER PENDANT

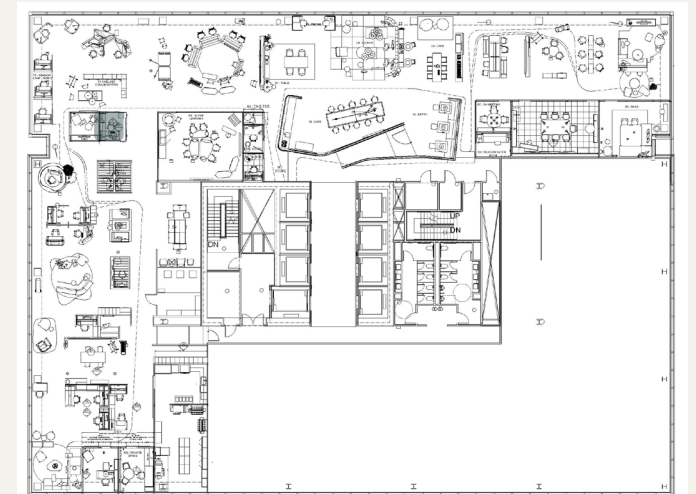
#### ECLIPSE LIGHT

FINISH: MATTE BLACK

#### BLU DOT WELF SHELF

FINISH: BLUSH

LOGITECH BRIO CAMERA





# Hybrid Work Neighborhood

## 8B Focus Pod

The high boundary of the Pod Tent supports privacy; however, amid the open plan, the semi-enclosed design allows workers to continue to feel connected to team members. This is designed to drop-in to check email, join a virtual meeting or focus on a task while the shelter provides a sense of respite.

### PRODUCT SOLUTIONS

#### STEELCASE SERIES 2

FRAME: SEAGULL

FABRIC: DESIGNTEX W MOONBEAM

AIR BACK: NEAR BLACK

BASE: POLISHED ALUMINUM

#### STEELCASE FLEX PERSONAL SPACES 120 DESK

TOP: SATIN WHITE

BASE: SEAGULL

POWER CORD: FUCHSIA BRAIDED

#### STEELCASE WORK TENT POD TENT

FABRIC: SHEER ARCTIC WHITE

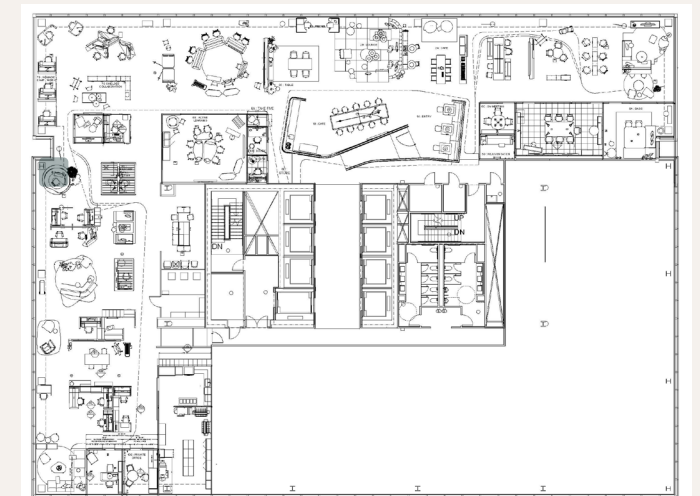
POLE: SILVER

#### MOOOI RUG

FOOLS PARADISE ROUND

#### MOOOI LIGHTING

PERCH FLOOR LAMP





# Hybrid Work Neighborhood

## 8C Hybrid Huddle

Creating a freestanding collaboration space is easy with the Orangebox Air 23 pod. This space offers the opportunity to quickly engage in a meeting with enhanced technology features MS Teams and Logitech. Together these products deliver a simplified video conferencing experience, making it easy to start, join and collaborate across devices.

### PRODUCT SOLUTIONS

#### WEST ELM WORK STERLING CHAIRS

FABRIC: DESIGNTEX BIXBY MACRO ONYX 803

BASE: POLISHED ALUMINUM 8046

#### WEST ELM WORK STERLING CHAIRS

FABRIC: DESIGNTEX BIXBY MICRO ONYX 803

BASE: POLISHED ALUMINUM 8046

#### STEELCASE VERLAY GUMDROP TABLE

TOP: ARCTIC WHITE

EDGE: ARCTIC WHITE

LEGS: BLANCHED MAPLE 32A2

BRACKETS / POWER: SAFFRON 4CZ7

#### ORANGEBOX AIRPOD 25

CAMIRA SYNERGY MIX LDS17

CAMIRA SYNERGY VENTURE LDS05

CAMIRA SYNERGY KINSHIP LDS56

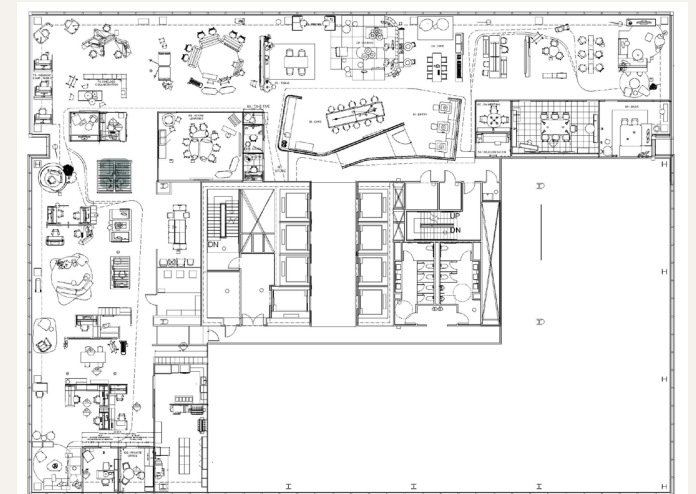
BLUDOT SLASH COAT RACK

FRAME: TOMATO

SHELF: WALNUT

#### FLOR CARPET TILE

COLLINS COTTAGE - BLACK





# Hybrid Work Neighborhood

## 9A1 Shared Focus (Linear)

Steelcase Flex and Migration SE desks with Privacy Wraps and screens create personal spaces that improve the in-office experience by providing users with control to work alone or together, find focus or collaborate.

Answer fence provides power distribution and a simple architectural form for desks to tether to and work “within the grid.” Lockers ground the setting while providing a space for hybrid workers to secure personal items.

### PRODUCT SOLUTIONS

#### STEELCASE GESTURE SEATING

FRAME: LIGHT | LIGHT SCHEME

FABRIC: DESIGNTEX TINY BOUCLE CRANBERRY

#### STEELCASE FLEX PERSONAL SPACES 120 DESK

TOP: BALTIC BIRCH

LEG: MERLE

#### STEELCASE FLEX HEIGHT ADJUSTABLE TABLE

TOP: BALTIC BIRCH, LEG : SEAGULL , FOOT : OBSIDIAN

#### MIGRATION SE TABLE – SPACE SAVER BASE

LEG: MERLE

TOP: SATIN WHITE

EDGE: PLYWOOD

#### UNIVERSAL LOCKER UNITS

PAINT: SMOKED MICA

PULL: BLACK GLOSS

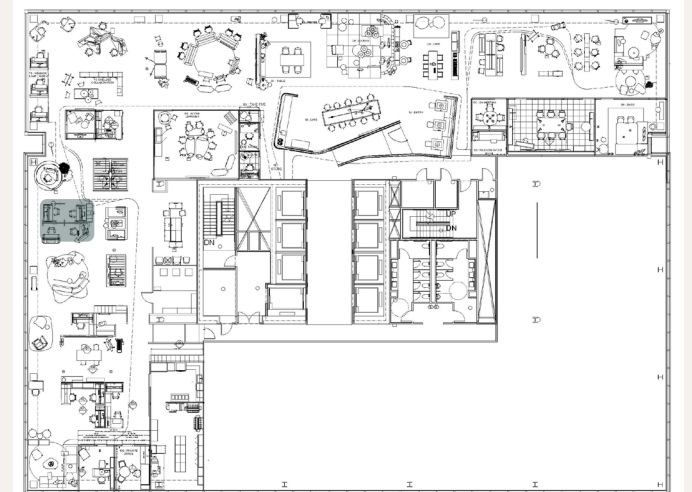
#### UNIVERSAL FILE SURROUND

FINISH: 24H3 SATIN STONE

EDGE: 6169 STONE



NOTE: APPLICATION REVISED – NEW RENDERING REQUIRED





# Hybrid Work Neighborhood

## 9A1 Shared Focus (Linear)

### PRODUCT SOLUTIONS (CONTINUED)

#### STEELCASE ANSWER FENCE

FRAME: OBSIDIAN

POWER: MERLE

ANSWER FRAMELESS GLASS – FENCE 19-1/2”h X 72”W

FINISH: FROSTED

#### STEELCASE FLEX PERSONAL PRIVACY WRAP

DESK MOUNT 120 WITH LIGHT

FINISH: 5KJ3 FOG

PLASTIC: 6053 SEAGULL

#### STEELCASE FLEX PERSONAL PRIVACY WRAP

DESK MOUNT 90 WITH LIGHT

FINISH: 5KJ3 FOG

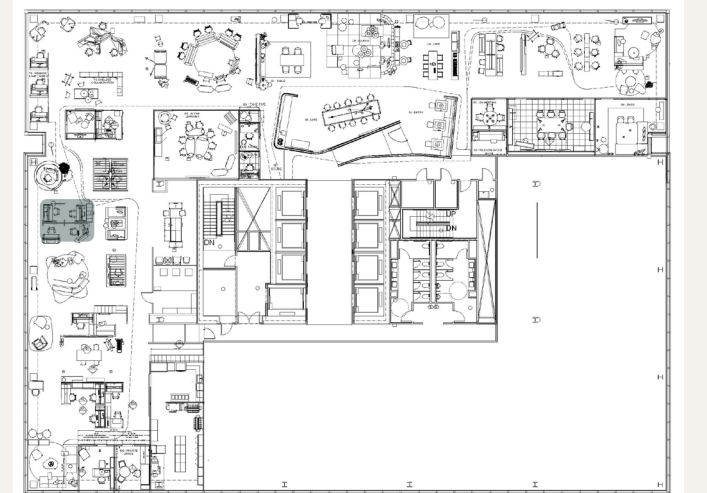
PLASTIC: 6053 SEAGULL

#### STEELCASE FLEX CURVED SCREEN, PAIR

FINISH: INTERSECTION P211 SUMMIT



NOTE: APPLICATION REVISED – NEW RENDERING REQUIRED





# Hybrid Work Neighborhood

## 9A2 Work Booth

The screens of this Lagunitas work booth gives users psychological safety in the open plan. You can enjoy a more relaxed posture or adjust the back cushion for a more focused position. The overall space is a great destination for comfortable focused time alone or for casual connections.

### PRODUCT SOLUTIONS

#### COALESSE LAGUNITAS – SEAT LOUNGE

SCREEN FABRIC: DESIGNTEX HEATHER MINT 512

CUSHION FABRIC: KVADRAT BASIL 0129

HANDLE: ELMO SOFT LEATHER EBONY L112

BRACKET: LOW GLOSS BLACK 4710

#### COALESSE LAGUNITAS CHAISE – SEAT LOUNGE

SCREEN FABRIC: DESIGNTEX HEATHER MINT 512

CUSHION FABRIC: DESIGNTEX BRUSHED FLANNEL WINE 302

HANDLE DESIGNTEX BRUSHED FLANNEL WINE 302

BRACKET: LOW GLOSS BLACK 4710

#### COALESSE LAGUNITAS WORKTABLE

BASE: LOW GLOSS BLACK

TOP: STAIN WHITE

#### TOM DIXON MELT PENDANT LAMPS

MINI: COPPER

LARGE: COPPER

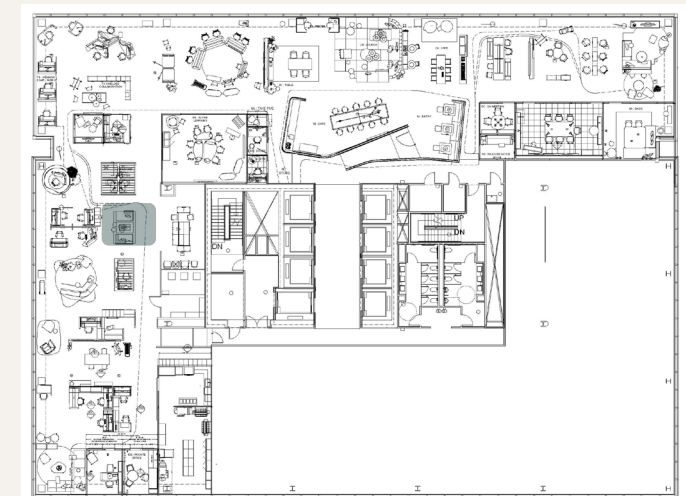
#### PILLOWS

KVADRAT HERO 0701

DESIGNTEX HEATHER MINT

#### NANIMARQUINA DIAGONAL RUG 6X9

FINISH: DIAGONAL 5 WITH FRINGE





# Hybrid Work Neighborhood

## 9A3 Collaborative Lounge

The Overhead Tent provides a sense of shelter and psychological safety to this collaborative lounge setting. The angle of the campfire lounge help connect the group. Users are provided with personal table options and thread power for personal artifacts and technology. A nearby mobile Flex Mobile Cart connects remote participants for hybrid meetings.

### PRODUCT SOLUTIONS

#### **BOLIA COSH ARMCHAIR MID BACK**

UPHOL: MEMORY FME06BOL LIGHT GREY FME06

LEG FINISH: OILED OAK 42

#### **CAMPFIRE LOUNGE, WATERFALL MULTI FABRIC**

UPHOL: WOLF GORDON CORK 4217 MOCHA

WATERFALL: KVADRAT HALLINGDAL 65 0200

#### **LAGUNITAS PERSONAL TABLE**

TOP: 24H1 SATIN WHITE

EDGE: 6271 PLYWOOD

BASE: 1ATJ SEA SALT

#### **FLEX SCREENS**

BILLIARD SEA SALT

#### **MOOOI CARPETS**

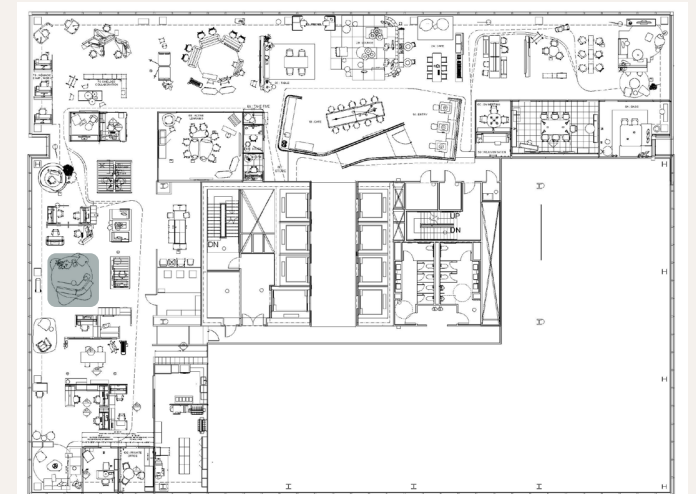
WALKING ON CLOUDS DUSK 350 ROUND

FLOS NOCTAMBULE FLOOR LAMP

LOGITECH MEETUP (ON CART)



NOTE: APPLICATION REVISED – NEW RENDERING REQUIRED





# Hybrid Work Neighborhood

## 9A4 Focus Pod

This pod enables the seamless transition from focus work to hybrid collaboration, without the need to look for a new space. The height-adjustable desk lets someone stand in a more engaged posture to present or participate in an evaluative session using the writable surface. The tower, shrouds and shelving provides shielding and space for personal items.

### PRODUCT SOLUTIONS

#### SILQ

UPPER FRAME: SEAGULL

LOWER FRAME: GLOSS WHITE

ARMS / BASE :SEAGULL

FABRIC: DESIGNTEX DIGITAL COM – TRIBAL PATTERN B

#### ALIGT

FABRIC: DESIGNTEC DIGITAL COM - ETRO

#### MACKINAC

WORKSURFACE: PLANKED OAK

BASE: PLANKED OAK

TOWER: LUXE MATTE COPPER 4B25

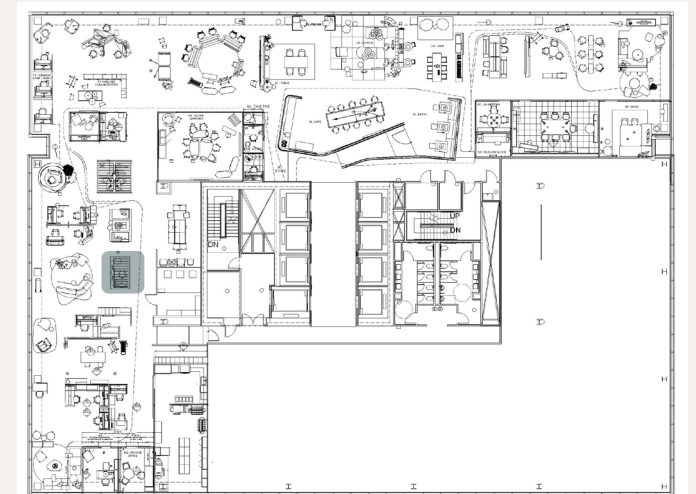
SHELVES : BACK PAINTED GLASS BLACK 6590

SHROUDS – INTERSECTION CHALK P212

COLUMN: STERLING

#### ECLIPSE LAMP

FINISH : 4135 NATTE BLACK





# Hybrid Work Neighborhood

## 9B1 Communal Bench

A communal setting that offers space for coworkers to engage with one another or work individually while benefiting from serendipitous connections with team members. You can work together or alone while maintaining a sense of community and culture. Nearby lockers (coming May) provide a place to secure personal items

### PRODUCT SOLUTIONS

#### STEELCASE ANSWER PANELS

TRIM: MERLE

POWER: PLATINUM SOLID

GLASS: ELECTRIC INDIGO

METAL: CLEAR COAT / CAST SHADOW

METAL: MATTE COPPER

FABRIC: BILLIARD PEWTER

FABRIC: INTERSECTION SUMMIT

WOOD: PLANKED OAK

#### STEELCASE MIGRATION SE

TOP: SATIN WHITE EDGE : PLYWOOD

BASE: MERLE

#### STEELCASE EE WARDROBE

CASE: FAWN CYPRESS

DOOR: ARCTIC WHITE

PULL: BEAM / DARK BRONZE

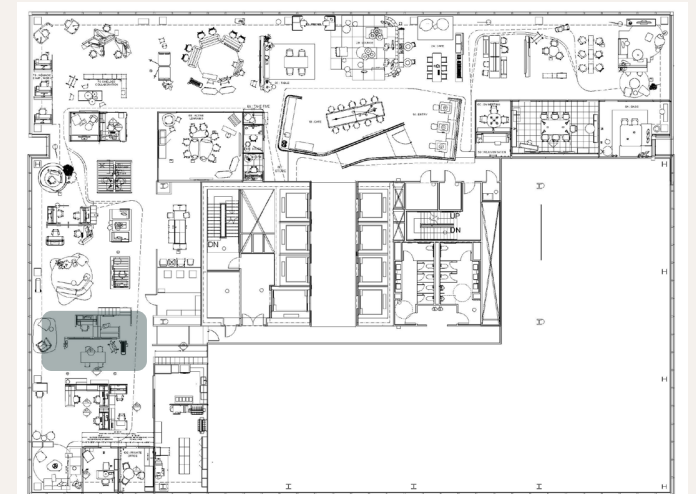
#### STEELCASE EE BOOKCASE

CASE: FAWN CYPRESS

SHELVES: DARK BRONZE

#### STEELCASE PERSONAL SHELVES

FINISH: MATTE COPPER



# Hybrid Work Neighborhood

9B2 Project Team

This space users panels to display analog marker and pin-up surfaces for long duration project team-work. The Microsoft Surface Hub and Roam Cart give remote participants a seat at the table and provide in person users a suite of interactive digital collaboration tools.

PRODUCT SOLUTIONS

**STEELCASE ANSWER PANELS**

- TRIM FINISH: MERLE
- POWER: PLATINUM SOLID
- GLASS: ELECTRIC INDIGO
- GLASS: MERLE
- GLASS: MERLOT
- METAL: CLEAR COAT / CAST SHADOW
- METAL: MATTE COPPER
- FABRIC: BILLIARD PEWTER
- FABRIC: INTERSECTION SUMMIT
- WOOD: PLANKED OAK

**ORANGEBOX CUBB STOOLS**

- FABRIC: REMIX BLUE JEAN
- LEGS: OAK FOOTREST : ARCTIC WHITE

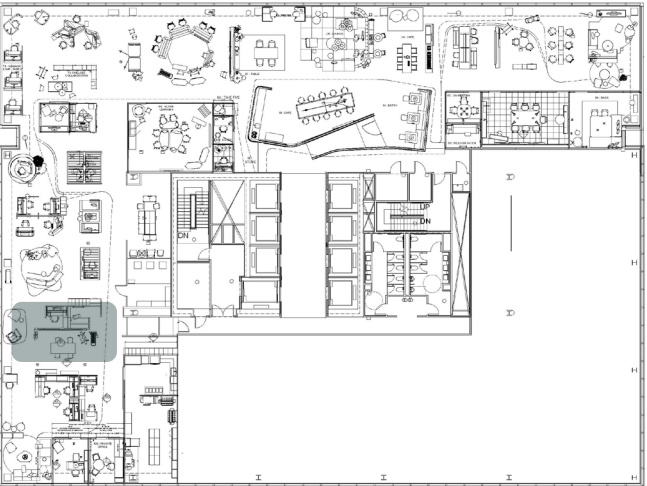
**DAVOS BENCH**

- UPHOL SEAT:KVADRAT PILOT 0622
- UPHOL SIDE: KVADRAT APPAREL 0683
- UPHOL BOTTOM: PILOT 0622

**ORANGEBOX CUBB TABLE**

- SURFACE : ARCTIC WHITE
- LEGS: OAK FOOTREST : BALTIC

**MICROSOFT 55 SURFACE HUB ON ROAM**





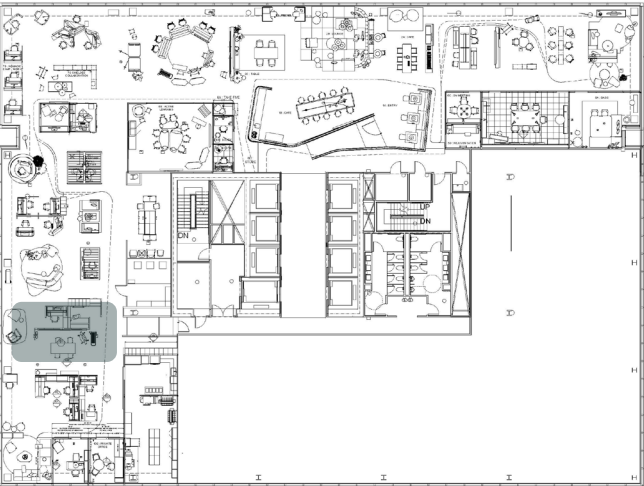
Settings in the Space

# Hybrid Work Neighborhood

9B2 Project Team

PRODUCT SOLUTIONS (CONTINUED)

- STEELCASE PERSONAL SHELVES  
FINISH :4CZ4 MERLOT
- WEST ELM WORK GREENPOINT CREDENZA  
FINISH: 3P61 PLANKED OAK
- STEELCASE FLEX SCREENS  
FABRIC: DESIGNTEX BESPOKE FLUID
- STEELCASE FLEX RAIL  
FINISH: MERLE
- STEELCASE FLEX TREE  
TOP: BALTIC BIRCH  
BASE: MERLE
- STEELCASE FLEX CARTS  
FRAME: MATTE COPPER  
SHELF: SMOKED MICA
- TOM DIXON MELT SCONCES  
FINISH: COPPER



# Hybrid Work Neighborhood

## 9B3 Focus Lounge

A great space for moments of respite, focus and contemplative evaluative work, this space provides shielded privacy in the open plan by panel wrapping the lounge. The person table keeps technology close, larger display is available for projection of personal content.

**PRODUCT SOLUTIONS**

**STEELCASE ANSWER PANELS**

- TRIM FINISH: MERLE
- POWER: PLATINUM SOLID
- METAL: CLEAR COAT / CAST SHADOW
- METAL: MATTE COPPER
- FABRIC: BILLIARD PEWTER
- WOOD: PLANKED OAK
- PAINT: ELECTRIC INDIGO

**TURNSTONE CAMPFIRE LOUNGE**

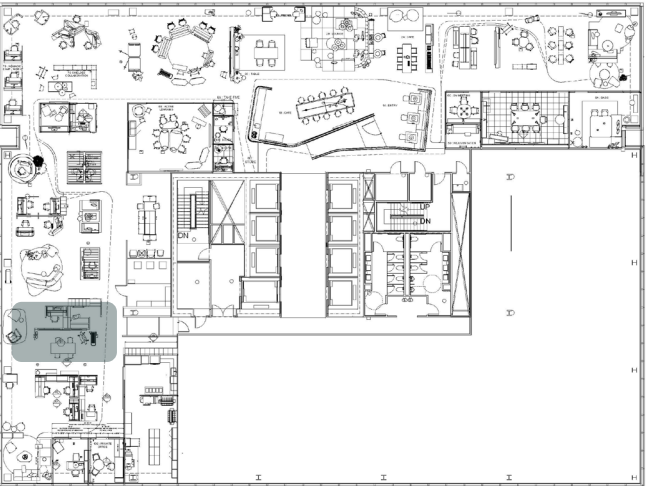
- FABRIC: DESIGNTEX HOLMES ONYX

**PERSONAL SHELVES**

- PAINT: ELCTRIC INDIGO

**LAGUNITAS PERSONAL TABLE**

- BASE: FUSCIA
- TOP: FUSION CAVIAR





Settings in the Space

# Hybrid Work Neighborhood

## 9C1 Professional Services

This dedicated, resident team setting supports the flow and transitions of work modes. Answer combined with diverse height adjustable desk and storage solutions illustrate ways to provide resident team members with destinations to balance needs for focus and collaboration.

### PRODUCT SOLUTIONS

#### SERIES 2

FRAME: SEAGULL

UPHOLSTERY: KVADRAT HUSK 0734

UPHOLSTERY: KVADRAT DIVINA 3 0756

BACK | KNIT: GRAPHITE

#### MIGRATION SE HAD

TOP: GREY KINGSWOOD

#### SLIM LEG HAD

TOP: GREY KINGSWOOD (HPL)

SHROUD FINISH: MATTE COPPER

#### CURRENCY ENHANCED STORAGE

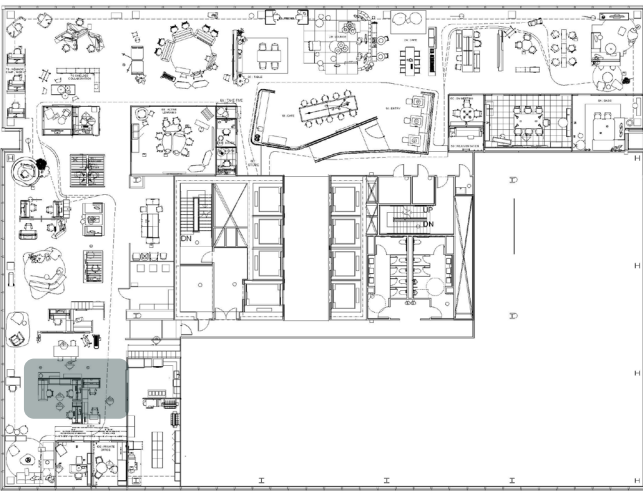
FINISH: SATIN WHITE

#### HD STORAGE

FINISH: GREY KINGSWOOD

INNER FINISH: LUX MATTE COPPER

PULL: JAZZ BLACK





Settings in the Space

# Hybrid Work Neighborhood

## 9C2 Professional Services

This dedicated, resident setting choice and range when selecting owned spaces. Varied panel and boundary heights balance levels of privacy. Migration SE defines height adjustability where universal solutions provide a clean aesthetic when a simpler feature set is desired. Mixed materiality illustrates choice.

### PRODUCT SOLUTIONS

#### ANSWER

FABRIC: DESIGNTEX EVERYWHERE TEXTURE – TWILIGHT

GLASS: SEA SALT

PAINT: MERLE

BOUNDARY: LAMINATE – MERLE

#### KARMAN

FRAME: SEAGULL

KNIT: MERLOT OPAQUE

#### MIGRATION SE HAD

TOP: SATIN WHITE

BASE: ARCTIC WHITE

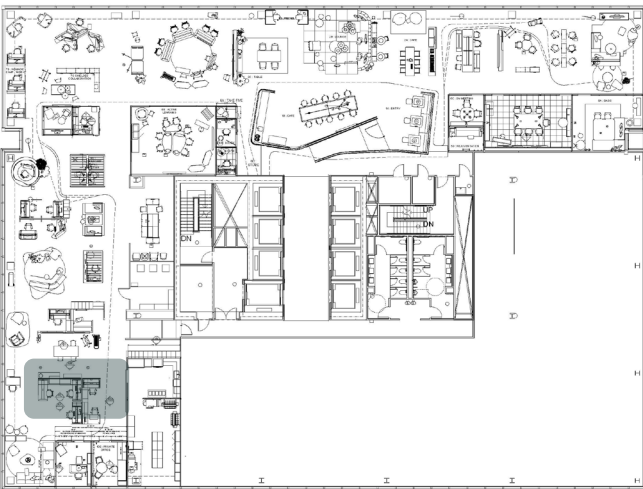
#### UNIVERSAL STORAGE

PAINT: SEA SALT

WOOD LAMINATE: GREY KINGSWOOD

LAMINATE: SATIN WHITE

PULL: JAZZ BLACK





Settings in the Space

# Hybrid Work Neighborhood

## 10A Team Lounge

An inspirational lounge space for contemplative collaborations or discussions. Personal tables keep technology within reach while mobile battery or under power access under lounge keeps this setting high performing. Storage units display personal artifacts adding personality to space while providing shielded privacy.

### PRODUCT SOLUTIONS

#### VICCARBE SISTEMA LOUNGE

FABRIC: DESIGNTEX BURRARD GRAVEL

FABRIC: KVADRAT RIA 0541

BASE: OBSIDIAN

#### BOLIA ISLAND COFFEE TABLE

FINISH : BLACK STAINED OAK 14

#### SPACE DIVISION

#### WEST ELM WORK COLLECTION BY STEELCASE GREENPOINT BOOKCASE

FRAME: DARK BRONZE

SHELVES: NATURAL OAK

#### MOOOI EDEN QUEEN ROUND RUG 350

#### CARL HANSEN EMBRACE LOUNGE - LEATHER BLACK

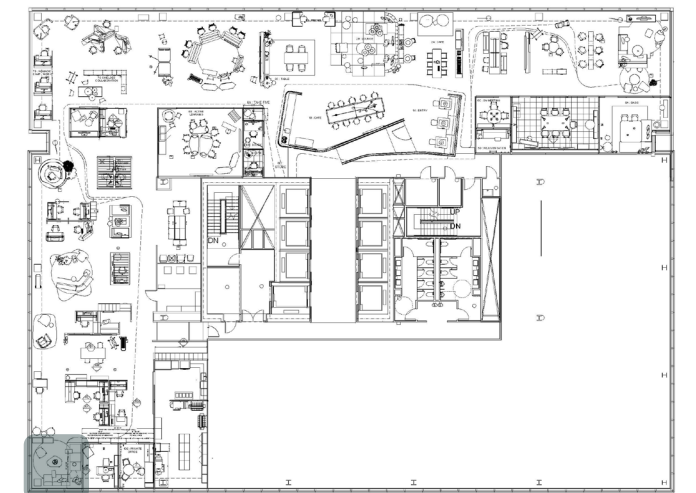
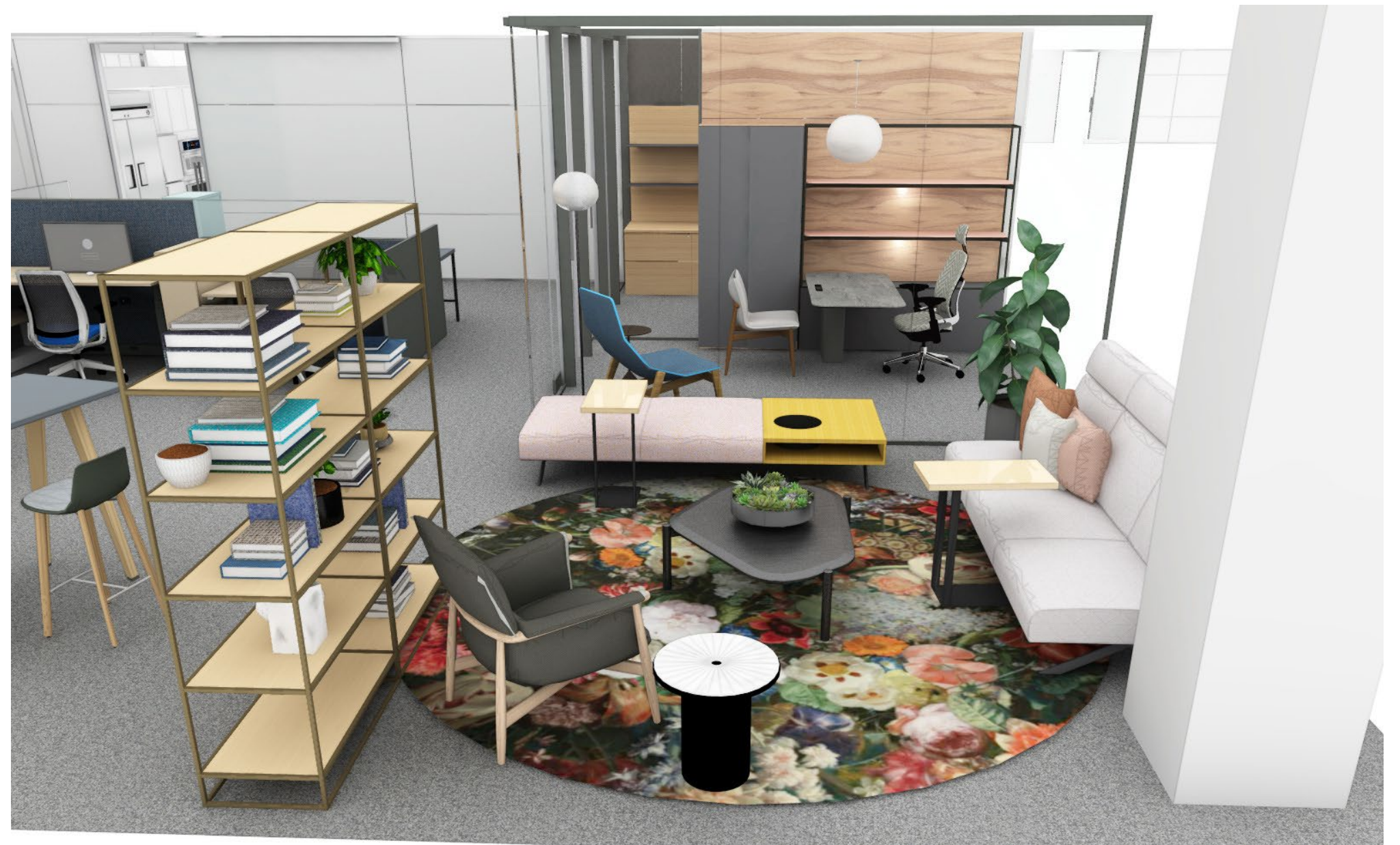
#### BLUDOT PLATEAU SIDE TABLE

#### WEST ELM WORK LINEAR C TABLE

#### VICCARBE FUNDA SIDE CHAIRS

UPHOLSTERY: KVADRAT REMIX

FRAME: BLACK





# Hybrid Work Neighborhood

## 10B Private Office

The postures in this office serve for multiple modes of work within the room. The height adjustable desk solves for sit to stand focused work. Open shelving displays artifacts while painted glass doors enclose wardrobe and personal storage. The lounge chair enables quiet contemplative moments. Walls are glass where possible to push light through the space, washed walnut adds elegance and personality to the room.

### PRODUCT SOLUTIONS

**LEAP CHAIR: ALUMINUM PACKAGE**

UPHOLSTERY DESIGNTEX BUTE LEWIS BIRCH 3803-801

**ESTABLISHED AND SONS LUCCIO CHAIR**

UPHOLSTERY: KVADRAT MOSAIC 2 0722

**MACKINAC**

SOLID SURFACE: CORIAN CARBON CONCRETE

COLUMN COVER: MERLE UNDER STRUCTURE: DARK HEATHER GREY

GROMMET: BLACK GLOSS

FOUNDATION GLASS: MERLE GLASS SHELVES: ROSE QUARTZ

**VICCARBE BURIN SIDE TABLE: BLACK**

**STORAGE: EE WARDROBE**

PAINT: NEAR BLACK METALLIC

WOOD: WASHED WALNUT

**LITE SCALE + VIA WALLS**

CLEAR GLAZING FRAMES: MERLE

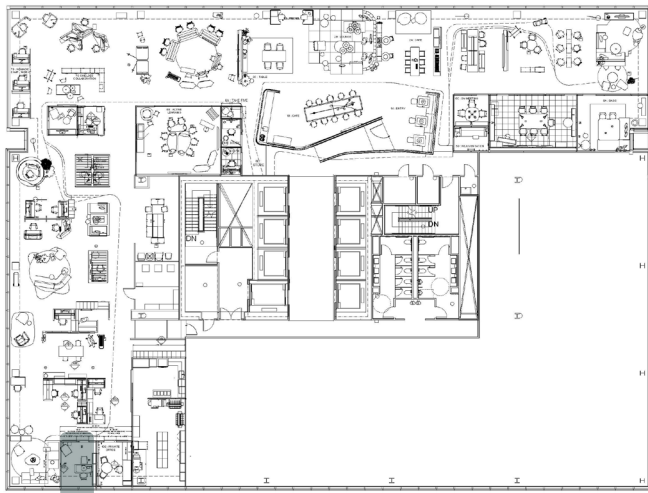
SKINS: WASHED WALNUT

**CARL HANSEN EMBRACE CHAIR ARMLESS**

FRAME FINISH: 3335 WALNUT OIL,

UPHOLSTERY: KVADRAT REMIX 606, KNIT WHITE EDGING

**FLOS GLOBALL FLOOR AND PENDANT LIGHTING**





# Hybrid Work Neighborhood

## 10E Private Office

This office plans for the deep focus required of today’s leader. The work-wall provides a height adjustable focal place for individual work, abundant storage, display for artifacts and adding personality and wardrobe for personal items. The resident can welcome guests and quickly turn to have a quick 2-3 person in person meeting and add remote participants via their studio desktop display.

### PRODUCT SOLUTIONS

**LEAP (SPECIAL LEATHER WRAPPED ARMCAPS)**

FRAME: CHROME PACKAGE SEAT: ELMO RUSTICAL LEATHER L319 EBONY

**MATTIAZZI SHE SAID CHAIR**

FINISH: NEON BLUE

**STEELCASE STUDIO MOE TABLE**

BASE: OBSIDIAN

TOP: 3VFX UNMARKED OAK

**ELECTIVE ELEMENTS STUDIO HAD**

FINISH : UNMARKED OAK 3VFX

**ELECTIVE ELEMENTS METAL BLADE SHELF**

FINISH: 4803 NEAR BLACK METALLIC IMBEDDED HERA LED LIGHT

**ELECTIVE ELEMENTS STORAGE**

FINISH: 3VFX UNMARKED OAK

PULL: INTEGRAL HEADSETS TO FLOOR

**ELECTIVE ELEMENTS TOWER**

CASE: 3VFX UNMARKED OAK

DOOR: GLASS MİRRORED BRONZE

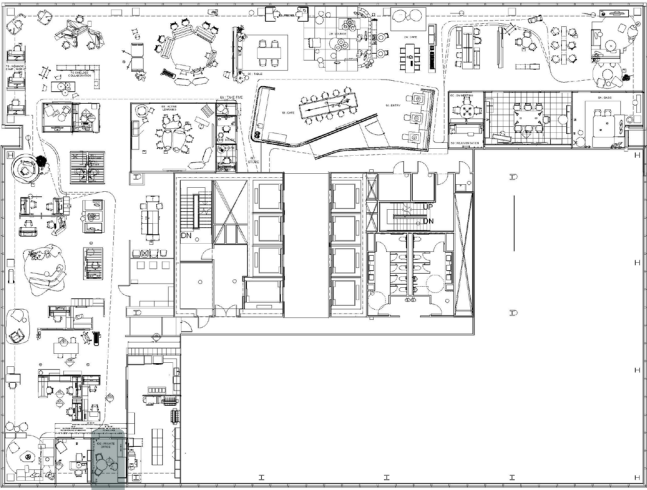
**ELECTIVE ELEMENTS TACKBOARD**

FABRIC : DESIGNTEX EVERYWHERE TEXTURE 4147-803 STEEL

**VIA + LITE SCALE**

FABRIC: DESIGNTEX BRUSHED FLANNEL 3797803 CHARCOAL

METAL: 7360 MERLE WRITABLE: POLYVISION 6502





Settings in the Space

# Hybrid Work Neighborhood

## 5D Rejuvenation

This setting offers employees and guests a quiet destination for respite, rejuvenation, quiet contemplative deep focus or even rest. The lounge provides a relaxed posture with integrated access to power and sliding | rotating personal surface for personal items and technology. Typical of clinical settings, the lounge also adjusts as a sleeper.

**PRODUCT SOLUTIONS**

**SURROUND LOUNGE**

FRAME: MERLE

FABRIC: DESIGNTEX HINT MIXED BERRY

PILLOW FABRIC: BRISA ASH

SHELF: ARCTIC WHITE TABLE : ARCTICE WHITE

**FLOS SMALL IC FLOOR LAMP**

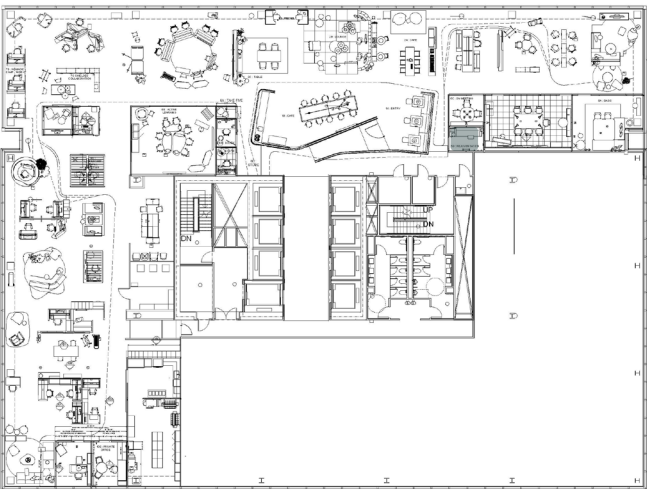
FINISH: BRASS

**BLUDOT TDH LEANING MIRROR**

WHITE ASH

**BLUDOT WOOK WALL**

FINISH: WALNUT





Settings in the Space

# Meeting Commons

## 5C Hybrid Huddle

Creating a collaboration space is easy with this small MS Teams room. This space offers the opportunity to quickly engage in a meeting with enhanced technology features from MS Teams and Logitech. Together these products deliver a simplified video conferencing experience, making it easy to start, join and collaborate across devices. Convenience power keeps devices working. Back painted glass skins provide an elegant writing surface for analog note taking.

### PRODUCT SOLUTIONS

**STEELCASE ELECTIVE ELEMENTS SLIM STORAGE**

FINISH: 3GRX

**COALESSE MARION152**

EXTERIOR FABRIC: KVADRAT RIA 0541

INTERIOR FABRIC: KVADRAT STEELCUT TRIO 806

BASE: POLISHED BASE & CHROME COLUMN

**STEELCASE VERLAY**

WORKSURFACE: VOLCANIC OAK

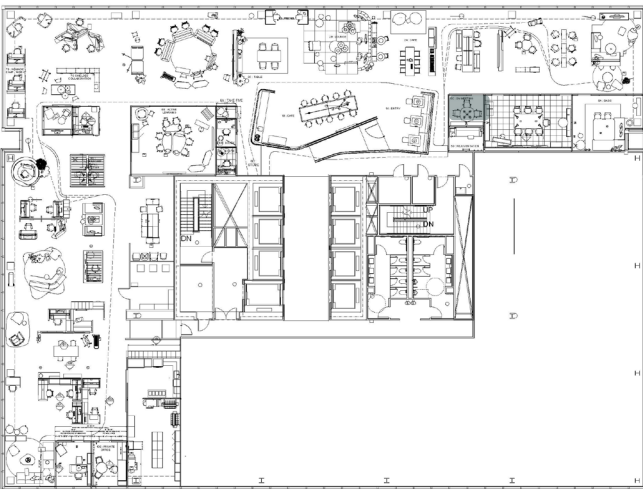
LEG: SMOKED MICA

LEG INTERIOR: IRON

POWER: ROSE QUARTZ

**JABRA PANECAST 50 CAMERA**

**LOGITECH CONTROL PAD**



# Meeting Commons

## 5B Hybrid Collaboration

Outfitted with collaborative technology and ample analog tools for pin up and generative collaboration, this space is optimized for dynamic working sessions. The micro-zones within the room support varied levels of participation, presentation and moments for reflection. The touch controller provides users with simple join controls to launch connections with remote participants and activate displays, camera and microphones.

### PRODUCT SOLUTIONS

**STEELCASE AMIA AIR STOOLS**

FRAME: MERLE

AIR BACK: ROYAL BLUE

MESH: ROYAL BLUE

SEAT DESIGNTEX PIXEL

**STEELCASE B-FREE BEAM**

LEGS: OAK

FOOTRAILS: OBSIDIAN

FABRIC: MAHARAM STRIPES PAUL SMITH 003

**ORANGBOX BORDER**

SURFACE : ARCTIC WHITE

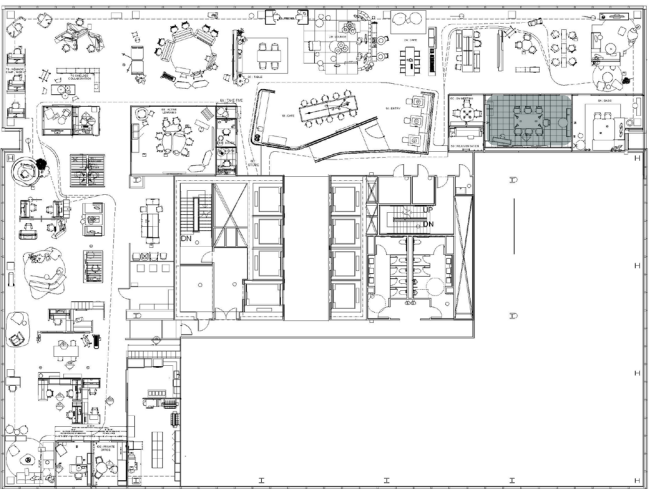
POWER : MILK

FABRIC : KVADRAT STEELCUT TRIO 745

FOOTRAIL : POLISHED CHROME

**COALESSE AWAIT OTTOMANS**

FABRIC : DESIGNTEX BIXBY MICRO BURGUNDY





Settings in the Space

# Meeting Commons

## 5B Hybrid Collaboration

**PRODUCT SOLUTIONS (CONTINUED)**

**ELECTIVE ELEMENTS SLIDING DOOR STORAGE**

CASE: PLANKED MAPLE

DOOR: BACK PAINTED GLASS MERCURY

DOOR TRIM: NICKEL METALLIC

**ELECTIVE ELEMENTS SHELVES**

FINISH: INDIGO LAMINATE

**VIA SKINS**

4AT6 CLEAR COAT METAL

3P51 OP PLANKED MAPLE

DESIGNTEX BRUSHED FLANNEL 3797403 BLUE

**STEELCASE FLEX RAILS**

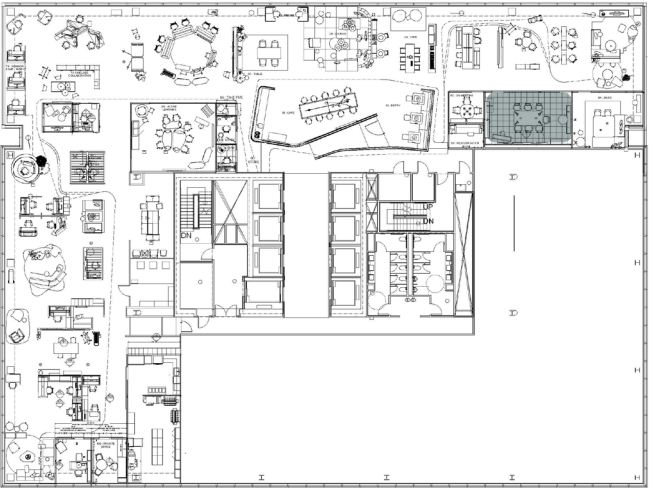
FINISH: MERLE

FLEX BOARDS

FINISH: DESIGNTEX BILLIARD PEWTER

**CRESTRON TOUCH PAD**

**LOGITECH CAMERA**





# Meeting Commons

## 5A Oasis

A warm welcome for groups to gather in person and connect with hybrid participants through an equitable experience. The mix of lounge and seated posture allows for a multi-modal set of experiences including dining, informative collaboration and group focus. Simple touch controls on the table allow for quick connections to the displays, camera and microphones to make the experience intuitive using the Neat Bar and pad.

### PRODUCT SOLUTIONS

**WEST ELM WORK COLLECTION CONOVER LOUNGE (DISCONTINUED)**

FABRIC: DESIGNTEX FOMO CHARCOAL BASE OAK

**BOLIA GRAB LARGE OTTOMAN**

FABRIC : QUAL STONE GREY

**BOLIA GRAB SMALL OTTOMAN**

FABRIC : NOVEL BLUE

**BOLIA C3 DINNING CHAIRS**

FINISH: NOVAL LIGHT GREY

**DAVOS BENCH**

SEAT:KVADRAT PILOT 0622 SIDE: KVADRAT APPAREL 0683

**COALESSE SW\_1 TABLE**

SURFACE : ERDL CUSTOM BLACK AND WHITE ON ASH

BASE: BURNISHED BRONZE

**VICCARBE ACE CHAIR**

UPHOLSTERY: LE147 BLUE LEATHER

ZIPPER: BLUE

FRAME: MATTE OAK

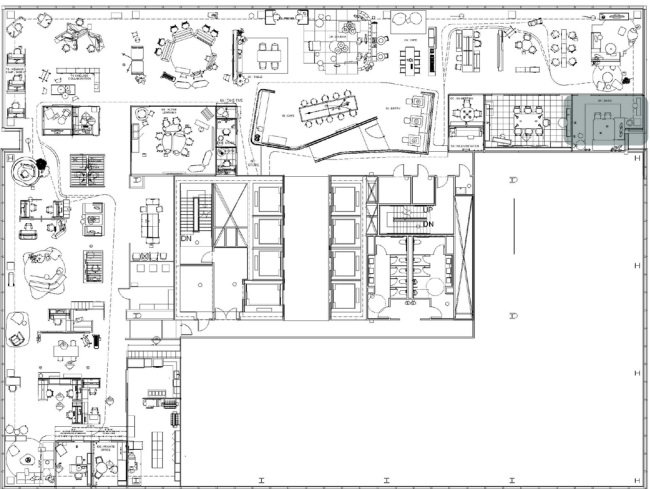
**MOOI ZIGZAG AREA RUG**

BLUE

**MOOI PERCH SCNCES**

**FLOS NOCTAMBULE FLOOR LAMP**

**NEAT BAR AND PAD**





# Gallery

## 4A Gallery

The Gallery is a destination to celebrate our community of brands. We we will plan to refresh this space often in effort to support our brand storytelling and speak to what’s new. Grid from Established & Sons provides a shielded level of privacy for collaborative meetings in the open allowing participants to share content to the digital display. On the outside, screens provide the privacy needed for individual respite and focus allowing for a secondary setting, creating boundary between settings.

**PRODUCT SOLUTIONS**

**ESTABLISHED AND SONS CORNER SOFA + BACK PADS**

FRAME FINISH: RED, LEG FINISH: JET BLACK  
UPHOLSTERY: KVADRAT HALLINGDAL 65 126

**ESTABLISHED AND SONS STRAIGHT DIVIDER**

FRAME FINISH: RED, LEG FINISH: JET BLACK  
UPHOLSTERY: KVADRAT ATLAS 621

**ESTABLISHED AND SONS MIXED SIZED CUSHIONS**

UPHOLSTERY: KVADRAT ATLAS 881

**COALESSE MASSAUD LOUNGE AND OTTOMAN**

UPHOLSTERY: DESIGNTEX BUTE STORR GREY  
BASE: GRAPHITE MATTE

TABLET: FUSION GRAPHITE

**VICCARBE NAGI ROCKER**

FABRIC: KVADRAT LILA 0141  
BASE: FLOURESCENT ORANGE RAL 20

**COALESSE CARL HANSEN PADDLE CHAIR**

FINISH: SMOKED OAK

**TOM DIXON SCREW CAFE TABLE**

TOP FINISH: WHITE MARBLE BASE FINISH: BLACK

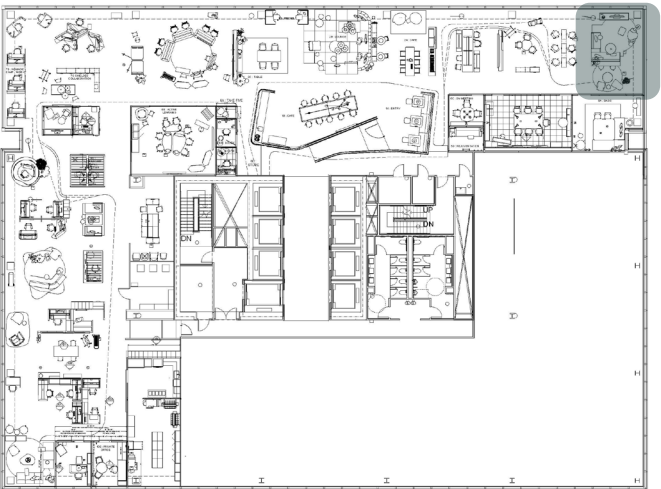
**COALESSE CARL HANSEN CH008 TABLE**

FINISH : OILED OAK

**MOOOI TRICHROIC HOXTON DUO SHAPE RUG - POLYAMIDE**

**MOOOI URBAN MANDALAS MEXICO CITY – 250 ROUND**

**MERSIVE CONTENT SHARE**





# Sandbox

## 3B Steelcase Seating Experience

Our research + insights on how people work and move inspire us to design innovative seating that provides dynamic comfort, encouraging healthy movement without sacrificing support. Dynamic Comfort delivers MOVEMENT. CONNECTION. FIT. Our entire work chairs portfolio is designed with uncompromising quality, craftsmanship and sustainability, and is BIFMA LEVEL® 3 certified. To us, it's more than just a chair. It's our commitment to supporting you.

### PRODUCT SOLUTIONS

**STEELCASE KARMAN – COLOR SCHEME - MERLE**

REAR FRAME / BASE: OBSIDIAN

INTERMIX: RED BLUE SHIFT

**STEELCASE KARMAN – COLOR SCHEME - SEAGULL**

REAR FRAME / BASE: SEAGULL

INTERMIX: PEACOCK

**STEELCASE KARMAN - BLACK**

REAR FRAME / BASE NIGHT BRONZE

INTERMIX: BURNISHED BRONZE

**LEAP - ALUNINUM PACKAGE**

UPHOLSTERY: L774: OIL 91102

**GESTURE - WRAP BACK COLOR SCHEME: LIGHT LIGHT**

UPHOLSTERY; TR17: BLACK TIE

BASE: 4799:PLATINUM METALLIC

**THINK FRAME: 7243: SEAGULL**

BACK FINISH: 3D KNIT 5092: GRAPHITE

SEAT FINISH: GR 10 DESIGNTEX BUTE TWEED 3804 803 GRAVEL

**AMIA FRAME: SEAGULL**

UPHOLSTERY: DESIGNTEX TINY BOUCLE 3926 801 FLINT

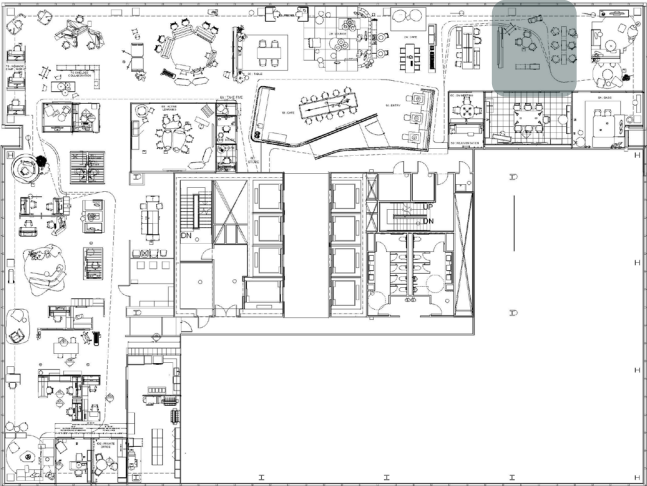
**STEELCASE SERIES 2 AIR BACK FINISH: NEAR BLACK FRAME: 7243 SEAGULL**

UPHOLSTERY: GR 7 DESIGNTEX HEATHER 3473 803 SLATE

**STEELCASE SERIES 1 FRAME : SEAGULL**

LUMBAR : NEAR BLACK MESH : GRAPHITE

SEAT : KVADRAT STEELCUT TRIO 806





# Sandbox

## 3A Surface Materials

The sandbox allows guests to explore the diverse ways they can add personality to our product offering to make solutions specific to their needs. This space enables choice making experiences using tactile surface material options as well as exploration of our digital tools on our website, such as planning ideas, via an immersive large scale digital display.

### PRODUCT SOLUTIONS

**CARL HANSEN WISHBONE CHAIR**

FRAME : OAK SOAP

SEAT : NATURAL PAPERCORD

**CARL HANSEN PK1 CHAIR (DISCONTINUED)**

FRAME : POLISHED ALUMINUM

SEAT : HALYARD NATURAL

**CARL HANSEN DINING CHAIR**

FRAME : OAK SOAP

SEAT : NATURAL PAPERCORD

**VICCARBE TRESTLE BENCH**

SEAT: PADDED UPHOLSTERY, MESSENGER MSGNR0038

FINISH: MOAK MATTE OAK

**VICCARBE TRESTLE BENCH**

SEAT: PADDED UPHOLSTERY, FIELD FIELD0673

FINISH: MOAK

**MATTIAZZI SHE SAID CHAIR**

FINISH: NATURAL ASH

**VICCARBE TRESTEL TABLE**

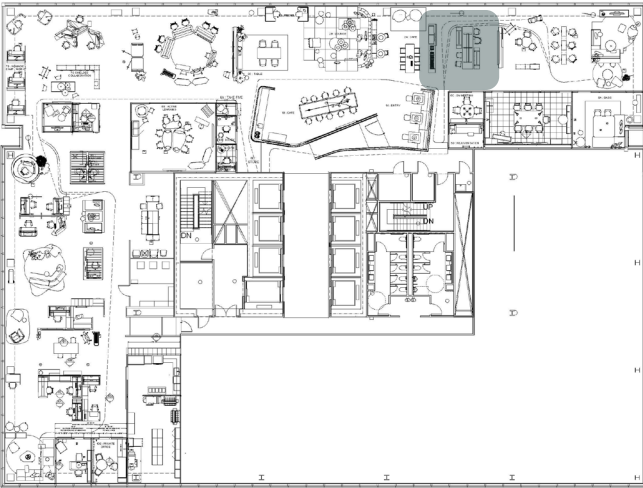
FINISH: MOAK

**UNIVERSAL LATERAL FILE**

FINISH: ARCTIC WHITE

**COMMON TOP**

FINISH: ARCTIC WHITE





Munich



Grand Rapids





New York



Paris





Boston

Madrid







Melbourne

Los Angeles







Chicago

Toronto





It's time to reimagine the places people work.



**Steelcase**

 RED THREAD