

CAPE COD 5
Headquarters
Hyannis, MA

Project Partners

Dellbrook | JKS
NELSON
Brown Lindquist Fenuccio &
Raber Architects, Inc.
AV Help Desk

Trends

Technology Integration
Collaboration
Attract + Retain
Brand + Culture

Solutions

Furniture
Demountable Walls
Technology



Great Hall | Kevin Brusie Photography

HQ5 represents “Five Ways” corporate mission

Cape Cod 5's new 80,000 s.f. headquarters, HQ5, on Route 132 in the Town of Barnstable represents their investment in and commitment to the region they serve – Cape Cod the Islands and Southeastern Massachusetts. The campus is a physical representation of their Green Initiative and corporate “Five Ways” of community engagement – community banking, responsible business practices, corporate leadership and volunteerism, advancement of financial know-how, and philanthropy. HQ5 consolidated field offices for 300 employees to create a central hub that thoughtfully integrates key cultural aspects such as sustainability and collaboration through technology.

New headquarters entices talent to cross over the bridge

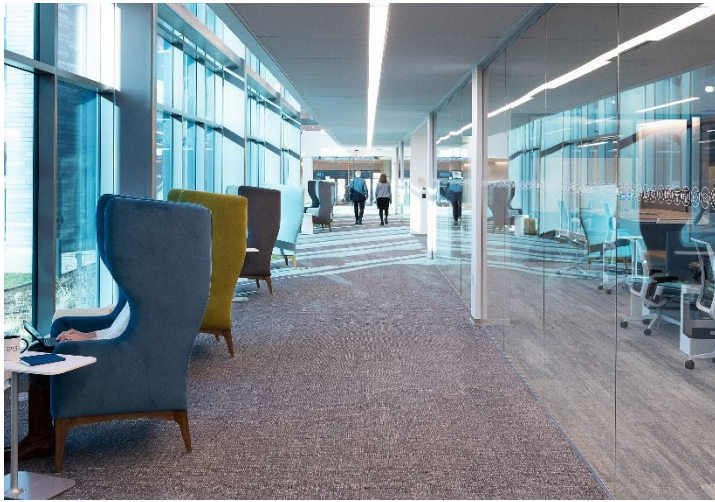
As the Cape's largest bank, creating a highly desirable work destination was a top priority for Cape Cod 5. Cape Cod 5 CEO and Chair Dorothy Savarese and Co-Presidents Matt Burke and Bert Talerman were the driving forces in creating a space that accurately reflected the organization's culture and talent attraction. With a long-standing history and well-established culture, the Executive Management Team remained open-minded about new space designs, tools, and technologies. Employees are surrounded by natural light throughout, an ecosystem of spaces that provide a variety of workstations, a café for collaborative work or gatherings, and much more.

The new campus features a fitness center, gender neutral bathrooms, a Mother's Room, solar roof design, and more. The flexible open floorplan enables connections and socializations to thrive in various neighborhoods with a mix of seating postures and settings. As business and employee needs change, applications were designed to make space or density modifications quickly and easily. The 11-acre grounds also feature a 217-space parking garage, the first parking structure on Cape Cod.



Cafe

CAPE COD 5 Headquarters Hyannis, MA



3rd Floor Great Hall



Workspace

“We” collaborate built with a flexible demountable wall system

The Great Hall is commonly referred to as the central artery that connects all community spaces together. It features full ceilings, glass walls, and wingback chairs overlooking a beautiful view. This central corridor connects the main entry space and stretches from the front of the building all the way to the back. Individual and group meetings can take place in “we” collaborate rooms, “we” focus rooms, small connect rooms, among other spaces.

Enclosed spaces are built with Steelcase Litescale and VIA demountable wall systems to provide unmatched aesthetic and acoustical privacy. These beautifully designed spaces have varying fabrics selections, marker boards and integrated technology.

Digital transformation

Cape Cod 5's commitment to leveraging Microsoft Teams was a critical step in their digital integration in the physical space. Implementing Teams in their meeting rooms, along with speakers and microphones to accommodate different sized spaces, created a consistent user experience. Whether employees work remotely, in HQ5, or at other bank locations, collaborating in Teams supports an energetic and engaging culture.

Technology is baked in throughout HQ5, including a customized 50ft wishbone shaped table courtesy of Create by Red Thread. Specifically designed for the size of the boardroom, this 30-seat table supports microphone and laptop connections. The 142" x 80" 4K LED, 36 panel video wall creates an immersive video and audio-conferencing experience for board members who can interface with a Crestron touch panel for simple intuitive controls. The thin bezel edge on the video wall and the 16 in-table retractable touch-to-talk microphones maintain the aesthetic of the room, while providing high quality and performance.

The Steelcase Room Wizard maximizes productivity and space utilization by allowing employees to schedule rooms in advance or ad-hoc without waiting for a meeting room. The five-way divisible conference center also optimizes real estate by configuring spaces to accommodate meetings, trainings, and large town hall gatherings on the fly.



Workspace Collaboration Area



Coffee Area